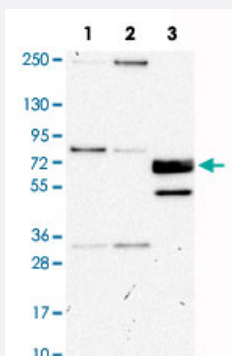


CUX1 polyclonal antibody

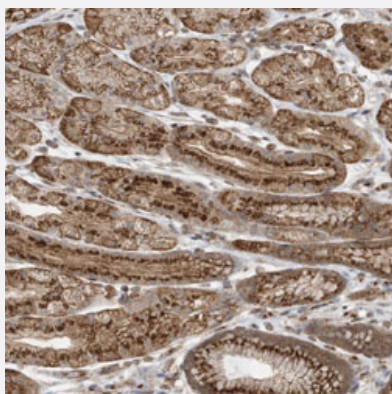
Catalog # PAB30618 Size 100 uL

Applications



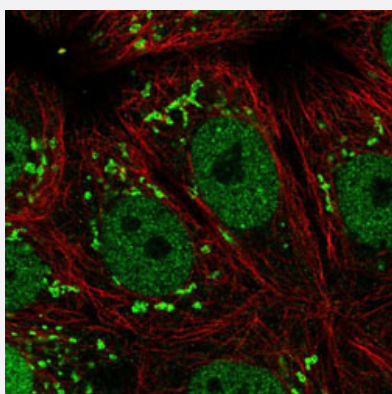
Western Blot

Western Blot analysis of Lane 1: RT-4, Lane 2: U-251MG sp and Lane 3: human plasma (IgG/HSA depleted) with CUX1 polyclonal antibody (Cat # PAB30618).



Immunohistochemistry (Formalin/PFA-fixed paraffin-embedded sections)

Immunohistochemical staining (Formalin-fixed paraffin-embedded sections) of human stomach, upper with CUX1 polyclonal antibody (Cat # PAB30618) shows strong cytoplasmic positivity in glandular cells.



Immunofluorescence

Immunofluorescent staining of MCF7 cells with CUX1 polyclonal antibody (Cat # PAB30618) (Green) shows positivity in the Golgi apparatus and nucleus but excluded from the nucleoli.

Specification

| | |
|----------------------------|---|
| Product Description | Rabbit polyclonal antibody raised against partial recombinant human CUX1. |
| Immunogen | Recombinant protein corresponding to human CUX1. |
| Sequence | KSFQGEIDALSKRSKEAEEAFLNVYKRLIDVPDPVPALDLGQQQLQLKVQRLHDIETENQKLRETL EYNKEFAEVKNQEVTIKALKEKIREYEQLTKNQAETIALEKEQKLQNDFAEKERKLQETQMSTTSK LEEAEHKVQSLQTALE |
| Host | Rabbit |
| Reactivity | Human |
| Form | Liquid |
| Purification | Antigen affinity purification |
| Isotype | IgG |
| Recommend Usage | Immunofluorescence (1-4 ug/mL) Immunohistochemistry (Formalin/PFA-fixed paraffin-embedded sections) (1:50-1:200) Western Blot (1:100-1:250) The optimal working dilution should be determined by the end user. |
| Storage Buffer | In PBS, pH 7.2 (40% glycerol, 0.02% sodium azide). |
| Storage Instruction | Store at 4°C. For long term storage store at -20°C. Aliquot to avoid repeated freezing and thawing. |
| Note | This product contains sodium azide: a POISONOUS AND HAZARDOUS SUBSTANCE which should be handled by trained staff only. |

Applications

- Western Blot

Western Blot analysis of Lane 1: RT-4, Lane 2: U-251MG sp and Lane 3: human plasma (IgG/HSA depleted) with CUX1 polyclonal antibody (Cat # PAB30618).

- Immunohistochemistry (Formalin/PFA-fixed paraffin-embedded sections)

Immunohistochemical staining (Formalin-fixed paraffin-embedded sections) of human stomach, upper with CUX1 polyclonal antibody (Cat # PAB30618) shows strong cytoplasmic positivity in glandular cells.

- Immunofluorescence

Immunofluorescent staining of MCF7 cells with CUX1 polyclonal antibody (Cat # PAB30618) (Green) shows positivity in the Golgi apparatus and nucleus but excluded from the nucleoli.

Gene Info — CUX1

| | |
|--------------------|---|
| Entrez GeneID | 1523 |
| Protein Accession# | P39880 |
| Gene Name | CUX1 |
| Gene Alias | CASP, CDP, CDP/Cut, CDP1, COY1, CUTL1, CUX, Clox, Cux/CDP, GOLIM6, Nbla10317, p100, p110, p200, p75 |
| Gene Description | cut-like homeobox 1 |
| Omim ID | 116896 |
| Gene Ontology | Hyperlink |
| Gene Summary | The protein encoded by this gene is a member of the homeodomain family of DNA binding proteins. It may regulate gene expression, morphogenesis, and differentiation and it may also play a role in the cell cycle progression. Several alternatively spliced transcript variants of this gene have been described, but the full-length nature of some of these variants has not been determined. [provided by RefSeq] |
| Other Designations | cut homeobox cut homolog cut-like 1, CCAAT displacement protein golgi integral membrane protein 6 putative protein product of Nbla10317 |

Disease

- [Tobacco Use Disorder](#)