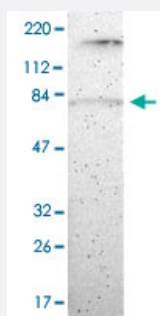


PRKCD polyclonal antibody

Catalog # PAB30614

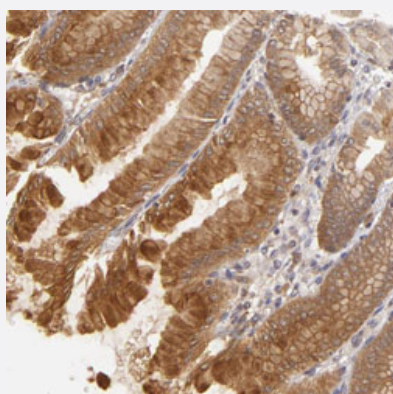
Size 100 uL

Applications



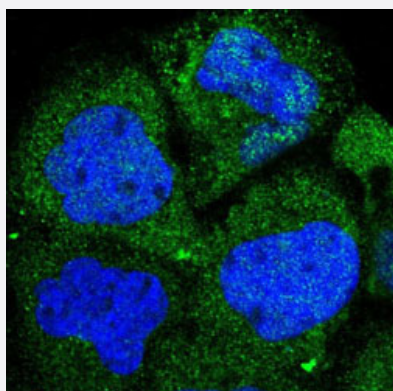
Western Blot (Cell lysate)

Western Blot analysis of RT-4 cell lysate with PRKCD polyclonal antibody (Cat # PAB30614).



Immunohistochemistry (Formalin/PFA-fixed paraffin-embedded sections)

Immunohistochemical staining (Formalin-fixed paraffin-embedded sections) of human stomach with PRKCD polyclonal antibody (Cat # PAB30614) shows strong cytoplasmic positivity in glandular cells.



Immunofluorescence

Immunofluorescent staining of A-431 cells with PRKCD polyclonal antibody (Cat # PAB30614) (Green) shows positivity in cytoplasm.

Specification

Product Description	Rabbit polyclonal antibody raised against partial recombinant human PRKCD.
Immunogen	Recombinant protein corresponding to human PRKCD.
Sequence	AFNSYELGSLQAEDEANQPFCAVKMKEALSTERGKTLVQKKPTMYPEWKSTFDAHIYEGRVIQV LMRAAEEPVSEVTVGVSVLAERCKKNNGKAEFWLDLQPQAKVLM SVQYFLEDVDCKQSMRSE DEAKFPTMNRGAIKQ
Host	Rabbit
Reactivity	Human
Form	Liquid
Purification	Antigen affinity purification
Isotype	IgG
Recommend Usage	Immunofluorescence (1-4 ug/mL) Immunohistochemistry (Formalin/PFA-fixed paraffin-embedded sections) (1:20-1:50) Western Blot (1:100-1:250) The optimal working dilution should be determined by the end user.
Storage Buffer	In PBS, pH 7.2 (40% glycerol, 0.02% sodium azide).
Storage Instruction	Store at 4°C. For long term storage store at -20°C. Aliquot to avoid repeated freezing and thawing.
Note	This product contains sodium azide: a POISONOUS AND HAZARDOUS SUBSTANCE which should be handled by trained staff only.

Applications

- Western Blot (Cell lysate)

Western Blot analysis of RT-4 cell lysate with PRKCD polyclonal antibody (Cat # PAB30614).

- Immunohistochemistry (Formalin/PFA-fixed paraffin-embedded sections)

Immunohistochemical staining (Formalin-fixed paraffin-embedded sections) of human stomach with PRKCD polyclonal antibody (Cat # PAB30614) shows strong cytoplasmic positivity in glandular cells.

- Immunofluorescence

Immunofluorescent staining of A-431 cells with PRKCD polyclonal antibody (Cat # PAB30614) (Green) shows positivity in cytoplasm.

Gene Info — PRKCD

Entrez GeneID	5580
Protein Accession#	Q05655
Gene Name	PRKCD
Gene Alias	MAY1, MGC49908, PKCD, nPKC-delta
Gene Description	protein kinase C, delta
Omim ID	176977
Gene Ontology	Hyperlink
Gene Summary	<p>Protein kinase C (PKC) is a family of serine- and threonine-specific protein kinases that can be activated by calcium and the second messenger diacylglycerol. PKC family members phosphorylate a wide variety of protein targets and are known to be involved in diverse cellular signaling pathways. PKC family members also serve as major receptors for phorbol esters, a class of tumor promoters. Each member of the PKC family has a specific expression profile and is believed to play distinct roles in cells. The protein encoded by this gene is one of the PKC family members. Studies both in human and mice demonstrate that this kinase is involved in B cell signaling and in the regulation of growth, apoptosis, and differentiation of a variety of cell types. Alternatively spliced transcript variants encoding the same protein have been observed. [provided by RefSeq]</p>
Other Designations	protein kinase C delta VIII

Pathway

- [Chemokine signaling pathway](#)
- [Fc epsilon RI signaling pathway](#)
- [Fc gamma R-mediated phagocytosis](#)
- [GnRH signaling pathway](#)
- [Neurotrophin signaling pathway](#)
- [Tight junction](#)
- [Type II diabetes mellitus](#)
- [Vascular smooth muscle contraction](#)

Disease

- [Cardiovascular Diseases](#)

- [Diabetes Mellitus](#)
- [Edema](#)
- [Genetic Predisposition to Disease](#)
- [Tobacco Use Disorder](#)