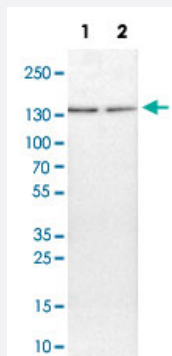


MAP3K9 polyclonal antibody

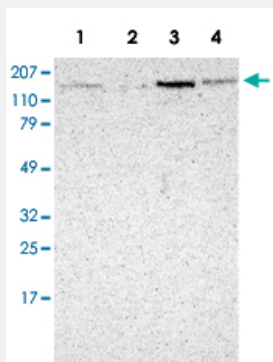
Catalog # PAB30609 Size 100 uL

Applications



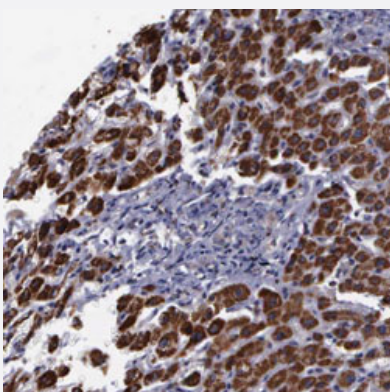
Western Blot (Cell lysate)

Western Blot analysis of Lane 1: NIH-3T3 cell lysate (mouse embryonic fibroblast cells) and Lane 2: NBT-II cell lysate (Wistar rat bladder tumor cells) with MAP3K9 polyclonal antibody (Cat # PAB30609).



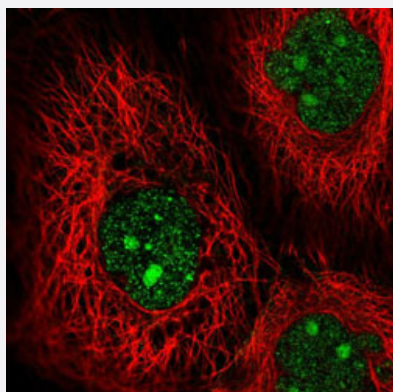
Western Blot

Western Blot analysis of Lane 1: RT-4, Lane 2: EFO-21, Lane 3: A-431 and Lane 4: human liver lysates with MAP3K9 polyclonal antibody (Cat # PAB30609).



Immunohistochemistry (Formalin/PFA-fixed paraffin-embedded sections)

Immunohistochemical staining (Formalin-fixed paraffin-embedded sections) of human liver with MAP3K9 polyclonal antibody (Cat # PAB30609) shows strong cytoplasmic positivity in hepatocytes.



Immunofluorescence

Immunofluorescent staining of A-431 cells with MAP3K9 polyclonal antibody (Cat # PAB30609) (Green) shows positivity in nucleus and nucleoli.

Specification

Product Description	Rabbit polyclonal antibody raised against partial recombinant human MAP3K9.
Immunogen	Recombinant protein corresponding to human MAP3K9.
Sequence	EGSPQRREKANGLSTPSESPHFHLGLKSLVDGYKQWSSSAPNLVKGPRSSPALPGFTSLMEME DEDSEGP GSGESRLQHSPSQSYLCIPFPRGEDGDGPSSDGIHEEPTPVNSATSTPQLTPTNSLK RGG
Host	Rabbit
Reactivity	Human, Mouse, Rat
Form	Liquid
Purification	Antigen affinity purification
Isotype	IgG
Recommend Usage	Immunofluorescence (1-4 ug/mL) Immunohistochemistry (Formalin/PFA-fixed paraffin-embedded sections) (1:50-1:200) Western Blot (1:250-1:500) The optimal working dilution should be determined by the end user.
Storage Buffer	In PBS, pH 7.2 (40% glycerol, 0.02% sodium azide).
Storage Instruction	Store at 4°C. For long term storage store at -20°C. Aliquot to avoid repeated freezing and thawing.
Note	This product contains sodium azide: a POISONOUS AND HAZARDOUS SUBSTANCE which should be handled by trained staff only.

Applications

- Western Blot (Cell lysate)

Western Blot analysis of Lane 1: NIH-3T3 cell lysate (mouse embryonic fibroblast cells) and Lane 2: NBT-II cell lysate (Wistar rat bladder tumor cells) with MAP3K9 polyclonal antibody (Cat # PAB30609).

- Western Blot

Western Blot analysis of Lane 1: RT-4, Lane 2: EFO-21, Lane 3: A-431 and Lane 4: human liver lysates with MAP3K9 polyclonal antibody (Cat # PAB30609).

- Immunohistochemistry (Formalin/PFA-fixed paraffin-embedded sections)

Immunohistochemical staining (Formalin-fixed paraffin-embedded sections) of human liver with MAP3K9 polyclonal antibody (Cat # PAB30609) shows strong cytoplasmic positivity in hepatocytes.

- Immunofluorescence

Immunofluorescent staining of A-431 cells with MAP3K9 polyclonal antibody (Cat # PAB30609) (Green) shows positivity in nucleus and nucleoli.

Gene Info — MAP3K9

Entrez GeneID	4293
---------------	----------------------

Protein Accession#	P80192
--------------------	------------------------

Gene Name	MAP3K9
-----------	--------

Gene Alias	MLK1, PRKE1
------------	-------------

Gene Description	mitogen-activated protein kinase kinase kinase 9
------------------	--

Omim ID	600136
---------	------------------------

Gene Ontology	Hyperlink
---------------	---------------------------

Other Designations	mixed lineage kinase 1 (tyr and ser/thr specificity)
--------------------	--

Pathway

- [MAPK signaling pathway](#)

Disease

- [Tobacco Use Disorder](#)