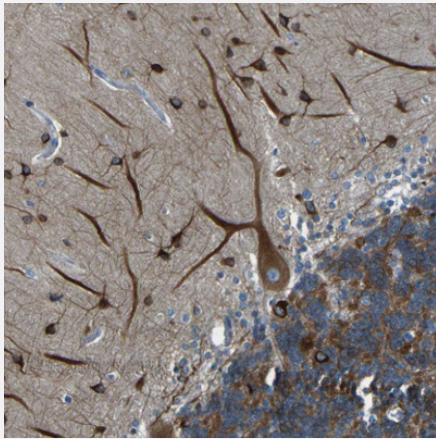


# MAP2 polyclonal antibody

Catalog # PAB30594

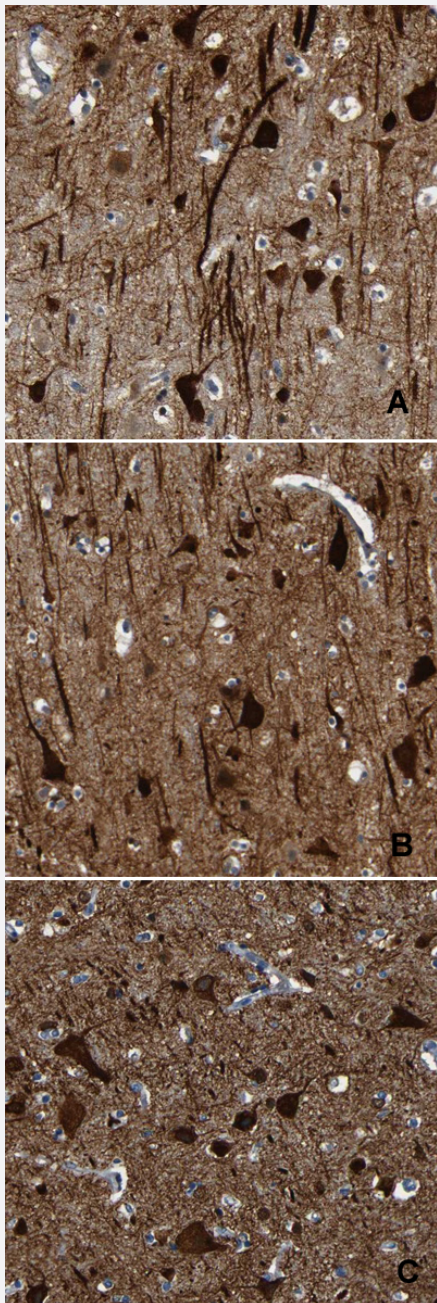
Size 100 uL

## Applications



### Immunohistochemistry (Formalin/PFA-fixed paraffin-embedded sections)

Immunohistochemical staining (Formalin-fixed paraffin-embedded sections) of human cerebellum with MAP2 polyclonal antibody (Cat # PAB30594) shows cytoplasmic positivity in Purkinje cells and molecular layer neurons.



## Immunohistochemistry (Formalin/PFA-fixed paraffin-embedded sections)

Immunohistochemical staining (Formalin-fixed paraffin-embedded sections) of human cerebral cortex with MAP2 polyclonal antibody (Cat # PAB30594).

A: Showing positivity in subsets of neurons and processes.

B: Showing strong cytoplasmic immunoreactivity in neurons, as well as positivity in neuropil.

C: Showing strong cytoplasmic and nuclear positivity in neuronal cells and glial cells.

## Specification

Product Description	Rabbit polyclonal antibody raised against partial recombinant human MAP2.
Immunogen	Recombinant protein corresponding to amino acids 8-148 of human MAP2.
Sequence	EAKAPHWTSAPL TEASAHSHPPEIKDQGGAGEGLVRSANGFPYREDEEGAFGEHGSQGTYSNT KENGINGELTSADRETAEEVSARVQVVTAEEAVAVLKGEQEKEAQHKDQTAALPLAAEETANLPP SPPSPASEQTVT
Host	Rabbit

Reactivity	Human, Mouse
Form	Liquid
Purification	Antigen affinity purification
Isotype	IgG
Recommend Usage	Immunofluorescence (1 - 4 ug/mL) Immunohistochemistry (Formalin/PFA-fixed paraffin-embedded sections) (1:50 - 1:200) The optimal working dilution should be determined by the end user.
Storage Buffer	In PBS, pH 7.2 (40% glycerol, 0.02% sodium azide).
Storage Instruction	Store at 4°C for short term storage. For long term storage store at -20°C. Aliquot to avoid repeated freezing and thawing.
Note	This product contains sodium azide: a POISONOUS AND HAZARDOUS SUBSTANCE which should be handled by trained staff only.

## Applications

- Immunohistochemistry (Formalin/PFA-fixed paraffin-embedded sections)

Immunohistochemical staining (Formalin-fixed paraffin-embedded sections) of human cerebellum with MAP2 polyclonal antibody (Cat # PAB30594) shows cytoplasmic positivity in Purkinje cells and molecular layer neurons.

- Immunohistochemistry (Formalin/PFA-fixed paraffin-embedded sections)

Immunohistochemical staining (Formalin-fixed paraffin-embedded sections) of human cerebral cortex with MAP2 polyclonal antibody (Cat # PAB30594).

A: Showing positivity in subsets of neurons and processes.

B: Showing strong cytoplasmic immunoreactivity in neurons, as well as positivity in neuropil.

C: Showing strong cytoplasmic and nuclear positivity in neuronal cells and glial cells.

## Gene Info — MAP2

Entrez GeneID	<a href="#">4133</a>
Protein Accession#	<a href="#">P11137</a>
Gene Name	MAP2
Gene Alias	DKFZp686l2148, MAP2A, MAP2B, MAP2C
Gene Description	microtubule-associated protein 2
Omim ID	<a href="#">157130</a>

## Gene Ontology

[Hyperlink](#)

## Gene Summary

This gene encodes a protein that belongs to the microtubule-associated protein family. The proteins of this family are thought to be involved in microtubule assembly, which is an essential step in neurogenesis. The products of similar genes in rat and mouse are neuron-specific cytoskeletal proteins that are enriched in dendrites, implicating a role in determining and stabilizing dendritic shape during neuron development. A number of alternatively spliced variants encoding distinct isoforms have been described. [provided by RefSeq]

## Other Designations

OTTHUMP00000163916

## Disease

- [Cardiovascular Diseases](#)
- [Diabetes Mellitus](#)
- [Edema](#)
- [Tobacco Use Disorder](#)