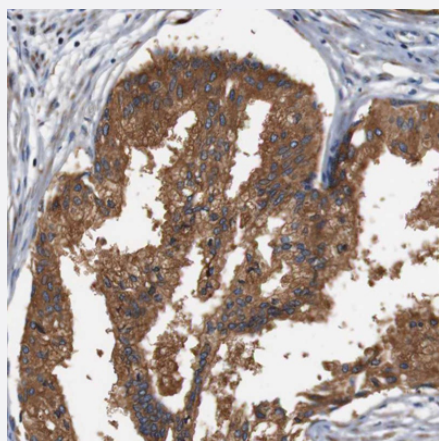


# LRP4 polyclonal antibody

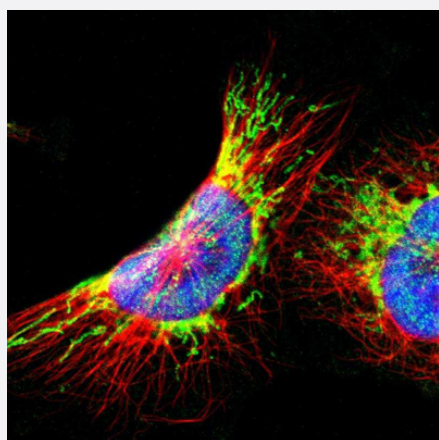
Catalog # PAB30585      Size 100 uL

## Applications



### Immunohistochemistry (Formalin/PFA-fixed paraffin-embedded sections)

Immunohistochemical staining (Formalin-fixed paraffin-embedded sections) of human prostate with LRP4 polyclonal antibody (Cat # PAB30585) shows strong cytoplasmic positivity in glandular cells.



### Immunofluorescence

Immunofluorescent staining of human cell line U-251 MG with LRP4 polyclonal antibody (Cat # PAB30585) shows positivity in mitochondria and nucleus but excluded from the nucleoli. Antibody staining is shown in green.

## Specification

<b>Product Description</b>	Rabbit polyclonal antibody raised against partial recombinant human LRP4.
<b>Immunogen</b>	Recombinant protein corresponding to amino acids 1579-1718 of human LRP4.
<b>Sequence</b>	<p>IQRVDKYSGRNKETVLANVEGLMDIIVSPQRQTGTNACGVNNGGCTHLCFARASDFVCACPDE</p> <p>PDSQPCSLVPGLVPPAPRATGMSEKSPVLPNTPTTLYSSTTRTRTSLEEVEGRCSERDARLGL</p> <p>CARSNDVPAAP</p>

Host	Rabbit
Reactivity	Human
Form	Liquid
Purification	Antigen affinity purification
Isotype	IgG
Recommend Usage	Immunofluorescence (1 - 4 ug/mL) Immunohistochemistry (Formalin/PFA-fixed paraffin-embedded sections) (1:50 - 1:200) The optimal working dilution should be determined by the end user.
Storage Buffer	In PBS, pH 7.2 (40% glycerol, 0.02% sodium azide).
Storage Instruction	Store at 4°C for short term storage. For long term storage store at -20°C. Aliquot to avoid repeated freezing and thawing.
Note	This product contains sodium azide: a POISONOUS AND HAZARDOUS SUBSTANCE which should be handled by trained staff only.

## Applications

- Immunohistochemistry (Formalin/PFA-fixed paraffin-embedded sections)

Immunohistochemical staining (Formalin-fixed paraffin-embedded sections) of human prostate with LRP4 polyclonal antibody (Cat # PAB30585) shows strong cytoplasmic positivity in glandular cells.

- Immunofluorescence

Immunofluorescent staining of human cell line U-251 MG with LRP4 polyclonal antibody (Cat # PAB30585) shows positivity in mitochondria and nucleus but excluded from the nucleoli. Antibody staining is shown in green.

## Gene Info — LRP4

Entrez GeneID	<a href="#">4038</a>
Protein Accession#	<a href="#">O75096</a>
Gene Name	LRP4
Gene Alias	KIAA0816, LRP10, MEGF7
Gene Description	low density lipoprotein receptor-related protein 4
Omim ID	<a href="#">604270</a>

**Gene Ontology**[Hyperlink](#)**Other Designations**

low-density lipoprotein receptor-related protein 4

**Disease**

- [Fractures](#)
- [Genetic Predisposition to Disease](#)
- [Osteoporosis](#)
- [Wounds and Injuries](#)