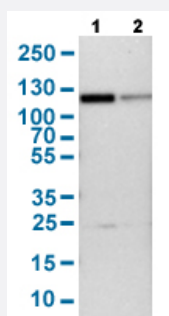


CUL4B polyclonal antibody

Catalog # PAB30584 Size 100 uL

Applications

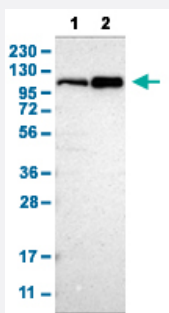


Western Blot (Cell lysate)

Western Blot analysis with CUL4B polyclonal antibody (Cat # PAB30584).

Lane 1: NIH-3T3 cell lysate (Mouse embryonic fibroblast cells)

Lane 2: NBT-II cell lysate (Rat Wistar bladder tumour cells)

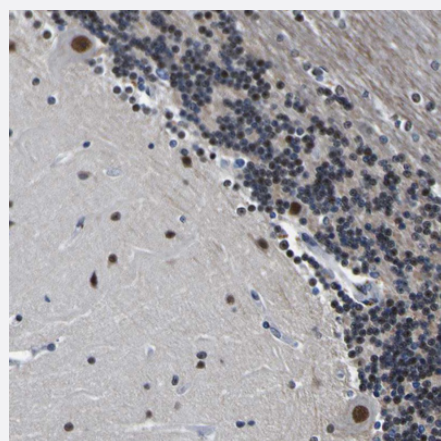


Western Blot

Western Blot analysis with CUL4B polyclonal antibody (Cat # PAB30584).

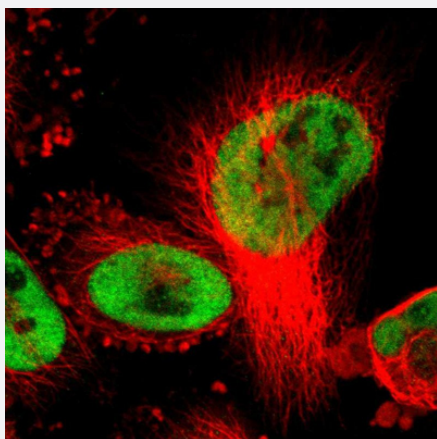
Lane 1: Human cell line RT-4

Lane 2: Human cell line U-251MG sp



Immunohistochemistry (Formalin/PFA-fixed paraffin-embedded sections)

Immunohistochemical staining (Formalin-fixed paraffin-embedded sections) of human cerebellum with CUL4B polyclonal antibody (Cat # PAB30584) shows strong nuclear positivity in Purkinje cells.



Immunofluorescence

Immunofluorescent staining of human cell line U-251 MG with CUL4B polyclonal antibody (Cat # PAB30584) shows positivity in nucleus but excluded from the nucleoli. Antibody staining is shown in green.

Specification

Product Description	Rabbit polyclonal antibody raised against partial recombinant human CUL4B.
Immunogen	Recombinant protein corresponding to amino acids 9-152 of human CUL4B.
Sequence	GDGNDDEATTSKDGGFSSPSPSAAAAAQEVRSATDGNTSTTPPTSAKKRKLNSSSSSSSNSSN EREDFDSTSSSSSTPPLQPRDSASPSTSSFCLGVSVAASSHVPIQKKLRFEDTLEFVGFDKMA EESSSSSSSSPTAATS
Host	Rabbit
Reactivity	Human, Mouse, Rat
Form	Liquid
Purification	Antigen affinity purification
Isotype	IgG
Recommend Usage	Immunofluorescence (1 - 4 ug/mL) Immunohistochemistry (Formalin/PFA-fixed paraffin-embedded sections) (1:50 - 1:200) Western Blot (1:100 - 1:250) The optimal working dilution should be determined by the end user.
Storage Buffer	In PBS, pH 7.2 (40% glycerol, 0.02% sodium azide).
Storage Instruction	Store at 4°C for short term storage. For long term storage store at -20°C. Aliquot to avoid repeated freezing and thawing.
Note	This product contains sodium azide: a POISONOUS AND HAZARDOUS SUBSTANCE which should be handled by trained staff only.

Applications

- Western Blot (Cell lysate)

Western Blot analysis with CUL4B polyclonal antibody (Cat # PAB30584).

Lane 1: NIH-3T3 cell lysate (Mouse embryonic fibroblast cells)

Lane 2: NBT-II cell lysate (Rat Wistar bladder tumour cells)

- Western Blot

Western Blot analysis with CUL4B polyclonal antibody (Cat # PAB30584).

Lane 1: Human cell line RT-4

Lane 2: Human cell line U-251MG sp

- Immunohistochemistry (Formalin/PFA-fixed paraffin-embedded sections)

Immunohistochemical staining (Formalin-fixed paraffin-embedded sections) of human cerebellum with CUL4B polyclonal antibody (Cat # PAB30584) shows strong nuclear positivity in Purkinje cells.

- Immunofluorescence

Immunofluorescent staining of human cell line U-251 MG with CUL4B polyclonal antibody (Cat # PAB30584) shows positivity in nucleus but excluded from the nucleoli. Antibody staining is shown in green.

Gene Info — CUL4B

Entrez GeneID [8450](#)

Protein Accession# [Q13620](#)

Gene Name CUL4B

Gene Alias DKFZp686F1470, KIAA0695, MRXHF2, MRXSC, SFM2

Gene Description cullin 4B

Omim ID [300304](#) [300354](#) [300639](#)

Gene Ontology [Hyperlink](#)

Gene Summary This gene is a member of the cullin family. The encoded protein forms a complex that functions as an E3 ubiquitin ligase and catalyzes the polyubiquitination of specific protein substrates in the cell . The protein interacts with a ring finger protein, and is required for the proteolysis of several regulators of DNA replication including chromatin licensing and DNA replication factor 1 and cyclin E. Multiple transcript variants encoding different isoforms have been found for this gene. [provided by RefSeq]

Other Designations OTTHUMP00000023946|OTTHUMP00000023947|cullin-4B

Pathway

- [Nucleotide excision repair](#)
- [Ubiquitin mediated proteolysis](#)