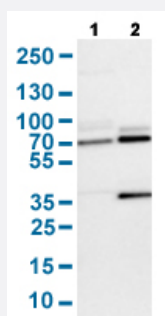


# SENPP1 polyclonal antibody

Catalog # PAB30583      Size 100 uL

## Applications

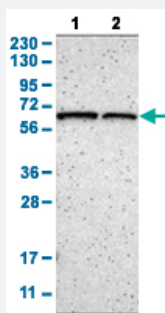


### Western Blot (Cell lysate)

Western Blot analysis with SENPP1 polyclonal antibody (Cat # PAB30583).

Lane 1: NIH-3T3 cell lysate (Mouse embryonic fibroblast cells)

Lane 2: NBT-II cell lysate (Rat Wistar bladder tumour cells)

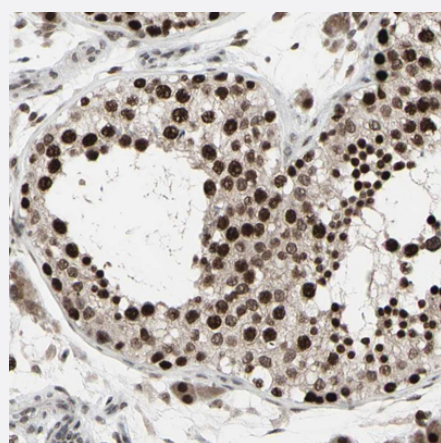


### Western Blot

Western Blot analysis with SENPP1 polyclonal antibody (Cat # PAB30583).

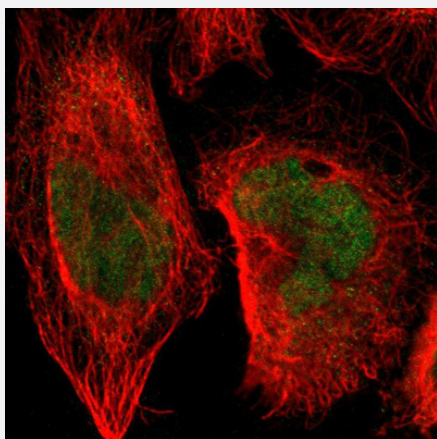
Lane 1: Human cell line RT-4

Lane 2: Human cell line U-251MG sp



### Immunohistochemistry (Formalin/PFA-fixed paraffin-embedded sections)

Immunohistochemical staining (Formalin-fixed paraffin-embedded sections) of human testis with SENPP1 polyclonal antibody (Cat # PAB30583) shows strong nuclear positivity in cells in seminiferous ducts.



## Immunofluorescence

Immunofluorescent staining of human cell line A-431 with SENP1 polyclonal antibody (Cat # PAB30583) shows positivity in nucleus. Antibody staining is shown in green.

## Specification

<b>Product Description</b>	Rabbit polyclonal antibody raised against partial recombinant human SENP1.
<b>Immunogen</b>	Recombinant protein corresponding to amino acids 85-204 of human SENP1.
<b>Sequence</b>	GDLRTFGQSANGQWRNSTPSSSSSLQKSRNSRSLYLETRKTSSGLSNSFAGKSNHHCHVSAYE KSFPIKPVPSPSWSGSCRRSLLSPKKTQRRHVSTAEETVQEEEREIYRQLLQMVTGK
<b>Host</b>	Rabbit
<b>Reactivity</b>	Human, Mouse, Rat
<b>Form</b>	Liquid
<b>Purification</b>	Antigen affinity purification
<b>Isotype</b>	IgG
<b>Recommend Usage</b>	Immunofluorescence (1 - 4 ug/mL) Immunohistochemistry (Formalin/PFA-fixed paraffin-embedded sections) (1:50 - 1:200) Western Blot (1:100 - 1:250) The optimal working dilution should be determined by the end user.
<b>Storage Buffer</b>	In PBS, pH 7.2 (40% glycerol, 0.02% sodium azide).
<b>Storage Instruction</b>	Store at 4°C for short term storage. For long term storage store at -20°C. Aliquot to avoid repeated freezing and thawing.
<b>Note</b>	This product contains sodium azide: a POISONOUS AND HAZARDOUS SUBSTANCE which should be handled by trained staff only.

## Applications

- Western Blot (Cell lysate)

Western Blot analysis with SENP1 polyclonal antibody (Cat # PAB30583).

Lane 1: NIH-3T3 cell lysate (Mouse embryonic fibroblast cells)

Lane 2: NBT-II cell lysate (Rat Wistar bladder tumour cells)

- Western Blot

Western Blot analysis with SENP1 polyclonal antibody (Cat # PAB30583).

Lane 1: Human cell line RT-4

Lane 2: Human cell line U-251MG sp

- Immunohistochemistry (Formalin/PFA-fixed paraffin-embedded sections)

Immunohistochemical staining (Formalin-fixed paraffin-embedded sections) of human testis with SENP1 polyclonal antibody (Cat # PAB30583) shows strong nuclear positivity in cells in seminiferous ducts.

- Immunofluorescence

Immunofluorescent staining of human cell line A-431 with SENP1 polyclonal antibody (Cat # PAB30583) shows positivity in nucleus. Antibody staining is shown in green.

## Gene Info — SENP1

Entrez GeneID	<a href="#">29843</a>
Protein Accession#	<a href="#">Q9P0U3</a>
Gene Name	SENP1
Gene Alias	SuPr-2
Gene Description	SUMO1/sentrin specific peptidase 1
Gene Ontology	<a href="#">Hyperlink</a>
Gene Summary	The covalent modification of proteins by the small ubiquitin (UBB; MIM 191339)-like protein SUMO (see SUMO1, MIM 601912) is implicated in the regulation of nucleocytoplasmic transport, genomic stability, gene transcription, and other processes. Sumoylation is catalyzed on target lysine residues by a multienzyme process and is reversed by desumoylating enzymes such as SENP1 (Yamaguchi et al., 2005 [PubMed 15923632]).[supplied by OMIM]
Other Designations	SUMO1/sentrin specific protease 1 sentrin/SUMO-specific protease sentrin/SUMO-specific protease 1