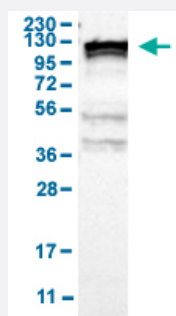


KIF11 polyclonal antibody

Catalog # PAB30576

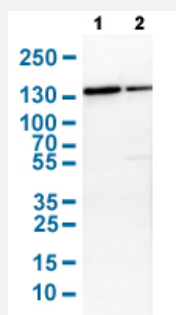
Size 100 uL

Applications



Western Blot (Cell lysate)

Western Blot analysis of human cell line RT-4 with KIF11 polyclonal antibody (Cat # PAB30576).

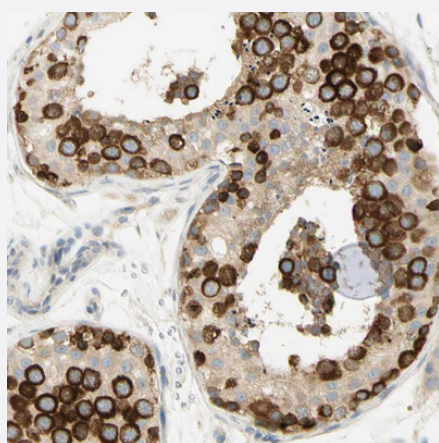


Western Blot (Cell lysate)

Western Blot analysis with KIF11 polyclonal antibody (Cat # PAB30576).

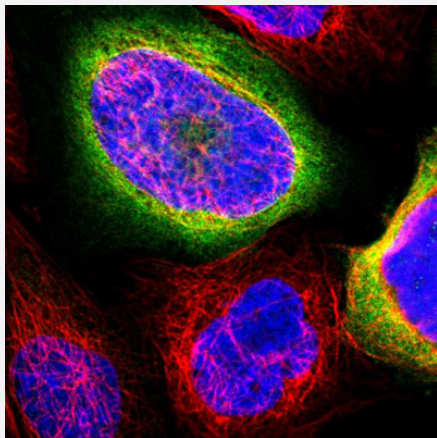
Lane 1: NIH-3T3 cell lysate (Mouse embryonic fibroblast cells)

Lane 2: NBT-II cell lysate (Rat Wistar bladder tumour cells)



Immunohistochemistry (Formalin/PFA-fixed paraffin-embedded sections)

Immunohistochemical staining (Formalin-fixed paraffin-embedded sections) of human testis with KIF11 polyclonal antibody (Cat # PAB30576) shows strong cytoplasmic positivity in cells of seminiferous ducts.



Immunofluorescence

Immunofluorescent staining of human cell line A-431 with KIF11 polyclonal antibody (Cat # PAB30576) shows positivity in cytoplasm. Antibody staining is shown in green.

Specification

Product Description	Rabbit polyclonal antibody raised against partial recombinant human KIF11.
Immunogen	Recombinant protein corresponding to amino acids 373-477 of human KIF11.
Sequence	ALIKEYTEEIERLKRDLAAREKNGVYISEENFRVMSGKLTQEEQVIELIEKIGAVEEEELNRVTELFMDNKNELDQCKSDLQNKQTQELETTQKHLQETKLQLVK
Host	Rabbit
Reactivity	Human, Mouse, Rat
Form	Liquid
Purification	Antigen affinity purification
Isotype	IgG
Recommend Usage	Immunofluorescence (1 - 4 ug/mL) Immunohistochemistry (Formalin/PFA-fixed paraffin-embedded sections) (1:50 - 1:200) Western Blot (1:100 - 1:250) The optimal working dilution should be determined by the end user.
Storage Buffer	In PBS, pH 7.2 (40% glycerol, 0.02% sodium azide).
Storage Instruction	Store at 4°C for short term storage. For long term storage store at -20°C. Aliquot to avoid repeated freezing and thawing.
Note	This product contains sodium azide: a POISONOUS AND HAZARDOUS SUBSTANCE which should be handled by trained staff only.

Applications

- Western Blot (Cell lysate)

Western Blot analysis of human cell line RT-4 with KIF11 polyclonal antibody (Cat # PAB30576).

- Western Blot (Cell lysate)

Western Blot analysis with KIF11 polyclonal antibody (Cat # PAB30576).

Lane 1: NIH-3T3 cell lysate (Mouse embryonic fibroblast cells)

Lane 2: NBT-II cell lysate (Rat Wistar bladder tumour cells)

- Immunohistochemistry (Formalin/PFA-fixed paraffin-embedded sections)

Immunohistochemical staining (Formalin-fixed paraffin-embedded sections) of human testis with KIF11 polyclonal antibody (Cat # PAB30576) shows strong cytoplasmic positivity in cells of seminiferous ducts.

- Immunofluorescence

Immunofluorescent staining of human cell line A-431 with KIF11 polyclonal antibody (Cat # PAB30576) shows positivity in cytoplasm. Antibody staining is shown in green.

Gene Info — KIF11

Entrez GeneID [3832](#)

Protein Accession# [P52732](#)

Gene Name KIF11

Gene Alias EG5, HKSP, KNSL1, TRIP5

Gene Description kinesin family member 11

Omim ID [148760](#)

Gene Ontology [Hyperlink](#)

Gene Summary This gene encodes a motor protein that belongs to the kinesin-like protein family. Members of this protein family are known to be involved in various kinds of spindle dynamics. The function of this gene product includes chromosome positioning, centrosome separation and establishing a bipolar spindle during cell mitosis. [provided by RefSeq]

Other Designations OTTHUMP00000020099|kinesin-like 1|kinesin-like spindle protein|kinesin-related motor protein|thyroid receptor interacting protein 5

Disease

- [Alzheimer disease](#)
- [Diabetes Mellitus](#)
- [Genetic Predisposition to Disease](#)
- [Glucose Intolerance](#)