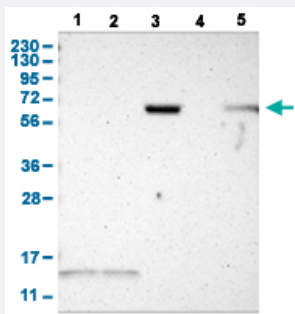


# JPH1 polyclonal antibody

Catalog # PAB30571      Size 100 uL

## Applications



### Western Blot

Western Blot analysis with JPH1 polyclonal antibody (Cat # PAB30571).

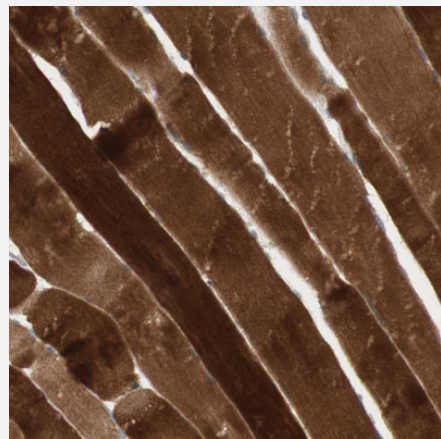
Lane 1: Human cell line RT-4

Lane 2: Human cell line U-251MG sp

Lane 3: Human plasma (IgG/HSA depleted)

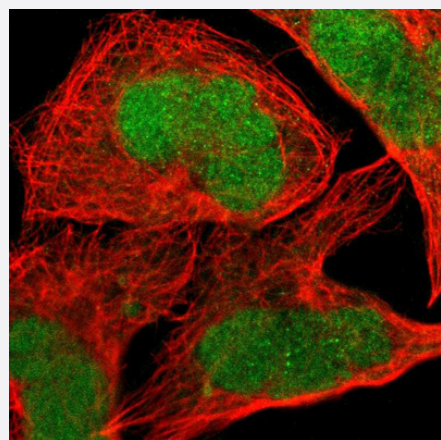
Lane 4: Human liver tissue

Lane 5: Human tonsil tissue



### Immunohistochemistry (Formalin/PFA-fixed paraffin-embedded sections)

Immunohistochemical staining (Formalin-fixed paraffin-embedded sections) of human skeletal muscle with JPH1 polyclonal antibody (Cat # PAB30571) shows strong cytoplasmic positivity in myocytes.



### Immunofluorescence

Immunofluorescent staining of human cell line A-431 with JPH1 polyclonal antibody (Cat # PAB30571) shows positivity in nucleus. Antibody staining is shown in green.

## Specification

<b>Product Description</b>	Rabbit polyclonal antibody raised against partial recombinant human JPH1.
<b>Immunogen</b>	Recombinant protein corresponding to amino acids 528-629 of human JPH1.
<b>Sequence</b>	PQSKYSGRHHIPNPSNGELHSQYHGYVVKLNAPQHPPVDVEDGDGSSQSSSALVHKPSANKWS PSKSVTKPVAKESKAEPKAKKSELAIPKNPASNDSCPAL
<b>Host</b>	Rabbit
<b>Reactivity</b>	Human
<b>Form</b>	Liquid
<b>Purification</b>	Antigen affinity purification
<b>Isotype</b>	IgG
<b>Recommend Usage</b>	Immunofluorescence (1 - 4 ug/mL) Immunohistochemistry (Formalin/PFA-fixed paraffin-embedded sections) (1:20 - 1:50) Western Blot (1:100 - 1:250) The optimal working dilution should be determined by the end user.
<b>Storage Buffer</b>	In PBS, pH 7.2 (40% glycerol, 0.02% sodium azide).
<b>Storage Instruction</b>	Store at 4°C for short term storage. For long term storage store at -20°C. Aliquot to avoid repeated freezing and thawing.
<b>Note</b>	This product contains sodium azide: a POISONOUS AND HAZARDOUS SUBSTANCE which should be handled by trained staff only.

## Applications

- Western Blot

Western Blot analysis with JPH1 polyclonal antibody (Cat # PAB30571).

Lane 1: Human cell line RT-4

Lane 2: Human cell line U-251MG sp

Lane 3: Human plasma (IgG/HSA depleted)

Lane 4: Human liver tissue

Lane 5: Human tonsil tissue

- Immunohistochemistry (Formalin/PFA-fixed paraffin-embedded sections)

Immunohistochemical staining (Formalin-fixed paraffin-embedded sections) of human skeletal muscle with JPH1 polyclonal antibody (Cat # PAB30571) shows strong cytoplasmic positivity in myocytes.

- Immunofluorescence

Immunofluorescent staining of human cell line A-431 with JPH1 polyclonal antibody (Cat # PAB30571) shows positivity in nucleus. Antibody staining is shown in green.

## Gene Info — JPH1

Entrez GeneID	<a href="#">56704</a>
---------------	-----------------------

Protein Accession#	<a href="#">Q9HDC5</a>
--------------------	------------------------

Gene Name	JPH1
-----------	------

Gene Alias	DKFZp762L0313, JP-1, JP1
------------	--------------------------

Gene Description	junctionophilin 1
------------------	-------------------

Omim ID	<a href="#">605266</a>
---------	------------------------

Gene Ontology	<a href="#">Hyperlink</a>
---------------	---------------------------

Gene Summary	Junctional complexes between the plasma membrane and endoplasmic/sarcoplasmic reticulum are a common feature of all excitable cell types and mediate cross talk between cell surface and intracellular ion channels. The protein encoded by this gene is a component of junctional complexes and is composed of a C-terminal hydrophobic segment spanning the endoplasmic/sarcoplasmic reticulum membrane and a remaining cytoplasmic domain that shows specific affinity for the plasma membrane. This gene is a member of the junctionophilin gene family. [provided by RefSeq]
--------------	---

Other Designations	junctionophilin type1 mitsugumin72
--------------------	------------------------------------

## Disease

- [Tobacco Use Disorder](#)