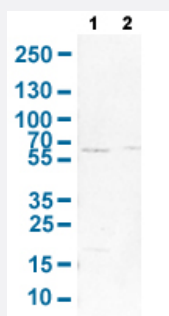


# SHOC2 polyclonal antibody

Catalog # PAB30570

Size 100 uL

## Applications

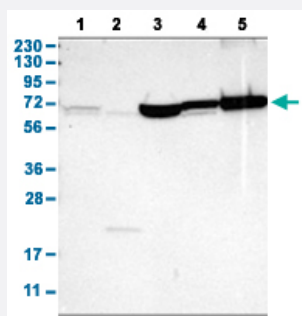


### Western Blot (Cell lysate)

Western Blot analysis with SHOC2 polyclonal antibody (Cat # PAB30570).

Lane 1: NIH-3T3 cell lysate (Mouse embryonic fibroblast cells)

Lane 2: NBT-II cell lysate (Rat Wistar bladder tumour cells)



### Western Blot

Western Blot analysis with SHOC2 polyclonal antibody (Cat # PAB30570).

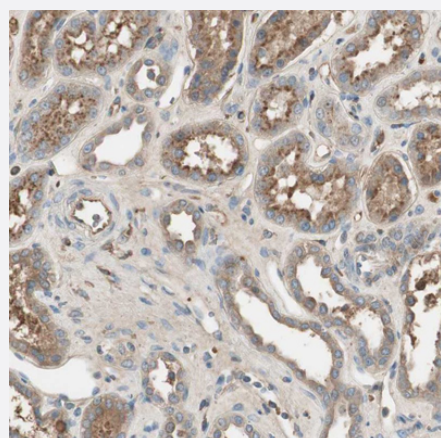
Lane 1: Human cell line RT-4

Lane 2: Human cell line U-251MG sp

Lane 3: Human plasma (IgG/HSA depleted)

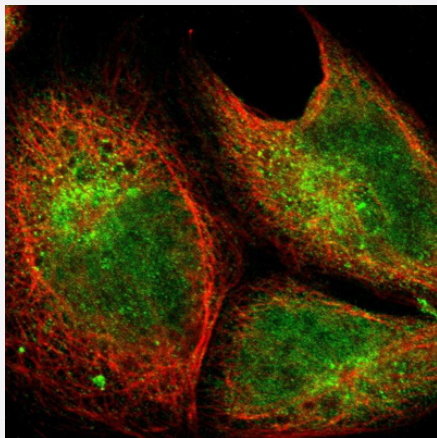
Lane 4: Human liver tissue

Lane 5: Human tonsil tissue



### Immunohistochemistry (Formalin/PFA-fixed paraffin-embedded sections)

Immunohistochemical staining (Formalin-fixed paraffin-embedded sections) of human kidney with SHOC2 polyclonal antibody (Cat # PAB30570) shows moderate cytoplasmic positivity in cells in tubules.



## Immunofluorescence

Immunofluorescent staining of human cell line A-431 with SHOC2 polyclonal antibody (Cat # PAB30570) shows positivity in cytoplasm and nucleus but excluded from the nucleoli. Antibody staining is shown in green.

## Specification

<b>Product Description</b>	Rabbit polyclonal antibody raised against partial recombinant human SHOC2.
<b>Immunogen</b>	Recombinant protein corresponding to amino acids 455-562 of human SHOC2.
<b>Sequence</b>	LEENKLESLPNEIAYLKDLQKLVLTTNNQLTTLPRGIGHLTNLTHLGLGENLLTHLP EEIGTLENLEELY LNDNPNLHSLPFELALCSKLSIMSIENCPLSHLPPQIVA
<b>Host</b>	Rabbit
<b>Reactivity</b>	Human, Mouse, Rat
<b>Form</b>	Liquid
<b>Purification</b>	Antigen affinity purification
<b>Isotype</b>	IgG
<b>Recommend Usage</b>	Immunofluorescence (1 - 4 ug/mL) Immunohistochemistry (Formalin/PFA-fixed paraffin-embedded sections) (1:500 - 1:1000) Western Blot (1:100 - 1:250) The optimal working dilution should be determined by the end user.
<b>Storage Buffer</b>	In PBS, pH 7.2 (40% glycerol, 0.02% sodium azide).
<b>Storage Instruction</b>	Store at 4°C for short term storage. For long term storage store at -20°C. Aliquot to avoid repeated freezing and thawing.
<b>Note</b>	This product contains sodium azide: a POISONOUS AND HAZARDOUS SUBSTANCE which should be handled by trained staff only.

## Applications

- Western Blot (Cell lysate)

Western Blot analysis with SHOC2 polyclonal antibody (Cat # PAB30570).

Lane 1: NIH-3T3 cell lysate (Mouse embryonic fibroblast cells)

Lane 2: NBT-II cell lysate (Rat Wistar bladder tumour cells)

- Western Blot

Western Blot analysis with SHOC2 polyclonal antibody (Cat # PAB30570).

Lane 1: Human cell line RT-4

Lane 2: Human cell line U-251MG sp

Lane 3: Human plasma (IgG/HSA depleted)

Lane 4: Human liver tissue

Lane 5: Human tonsil tissue

- Immunohistochemistry (Formalin/PFA-fixed paraffin-embedded sections)

Immunohistochemical staining (Formalin-fixed paraffin-embedded sections) of human kidney with SHOC2 polyclonal antibody (Cat # PAB30570) shows moderate cytoplasmic positivity in cells in tubules.

- Immunofluorescence

Immunofluorescent staining of human cell line A-431 with SHOC2 polyclonal antibody (Cat # PAB30570) shows positivity in cytoplasm and nucleus but excluded from the nucleoli. Antibody staining is shown in green.

## Gene Info — SHOC2

Entrez GeneID	<a href="#">8036</a>
Protein Accession#	<a href="#">Q9UQ13</a>
Gene Name	SHOC2
Gene Alias	FLJ60412, KIAA0862, SIAA0862, SOC-2, SOC2, SUR-8, SUR8
Gene Description	soc-2 suppressor of clear homolog (C. elegans)
Omim ID	<a href="#">602775</a>
Gene Ontology	<a href="#">Hyperlink</a>
Gene Summary	C. elegans
Other Designations	OTTHUMP00000020481 soc-2 suppressor of clear homolog suppressor of clear, C. elegans, homolog of