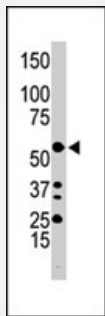


ILK polyclonal antibody

Catalog # PAB3057

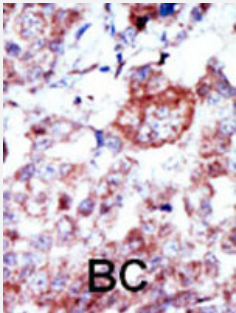
Size 400 uL

Applications



Western Blot (Cell lysate)

Western blot analysis of Ilk polyclonal antibody (Cat # PAB3057) in HL-60 cell lysate. ILK (Arrow) was detected using purified polyclonal antibody. Secondary HRP-anti-rabbit was used for signal visualization with chemiluminescence.



Immunohistochemistry (Formalin/PFA-fixed paraffin-embedded sections)

Formalin-fixed and paraffin-embedded human cancer tissue reacted with Ilk polyclonal antibody (Cat # PAB3057), which was peroxidase-conjugated to the secondary antibody, followed by AEC staining. This data demonstrates the use of this antibody for immunohistochemistry; clinical relevance has not been evaluated. BC = breast carcinoma; HC = hepatocarcinoma.

Specification

Product Description	Rabbit polyclonal antibody raised against synthetic peptide of ILK.
Immunogen	A synthetic peptide (conjugated with KLH) corresponding to N-terminus of human ILK1.
Host	Rabbit
Reactivity	Human
Form	Liquid
Purification	Protein G purification

Recommend Usage	Western Blot (1:1000) Immunohistochemistry (1:50-100) The optimal working dilution should be determined by the end user.
Storage Buffer	In PBS (0.09% sodium azide)
Storage Instruction	Store at 4°C. For long term storage store at -20°C. Aliquot to avoid repeated freezing and thawing.
Note	This product contains sodium azide: a POISONOUS AND HAZARDOUS SUBSTANCE which should be handled by trained staff only.

Applications

- Western Blot (Cell lysate)

Western blot analysis of Ilk polyclonal antibody (Cat # PAB3057) in HL-60 cell lysate. ILK (Arrow) was detected using purified polyclonal antibody. Secondary HRP-anti-rabbit was used for signal visualization with chemiluminescence.

- Immunohistochemistry (Formalin/PFA-fixed paraffin-embedded sections)

Formalin-fixed and paraffin-embedded human cancer tissue reacted with Ilk polyclonal antibody (Cat # PAB3057), which was peroxidase-conjugated to the secondary antibody, followed by AEC staining. This data demonstrates the use of this antibody for immunohistochemistry; clinical relevance has not been evaluated. BC = breast carcinoma; HC = hepatocarcinoma.

Gene Info — ILK

Entrez GeneID	3611
Protein Accession#	O55222
Gene Name	ILK
Gene Alias	DKFZp686F1765, P59
Gene Description	integrin-linked kinase
Omim ID	602366
Gene Ontology	Hyperlink
Gene Summary	Transduction of extracellular matrix signals through integrins influences intracellular and extracellular functions, and appears to require interaction of integrin cytoplasmic domains with cellular proteins. Integrin-linked kinase (ILK), interacts with the cytoplasmic domain of beta-1 integrin. This gene encodes a serine/threonine protein kinase with 4 ankyrin-like repeats, which associates with the cytoplasmic domain of beta integrins and acts as a proximal receptor kinase regulating integrin-mediated signal transduction. Multiple alternatively spliced transcript variants encoding the same protein have been found for this gene. [provided by RefSeq]

Other Designations

-

Publication Reference

- [Fenofibrate suppresses growth of the human hepatocellular carcinoma cell via PPAR \$\gamma\$ -independent mechanisms.](#)

Yamasaki D, Kawabe N, Nakamura H, Tachibana K, Ishimoto K, Tanaka T, Aburatani H, Sakai J, Hamakubo T, Kodama T, Doi T.

European Journal of Cell Biology 2011 Aug; 90(8):657.

Application: WB-Ce, Human, Huh-7 cells

- [Carcinoembryonic antigen inhibits anoikis in colorectal carcinoma cells by interfering with TRAIL-R2 \(DR5\) signaling.](#)

Samara RN, Laguinge LM, Jessup JM.

Cancer Research 2007 May; 67(10):4774.

Pathway

- [Endometrial cancer](#)
- [Focal adhesion](#)
- [PPAR signaling pathway](#)