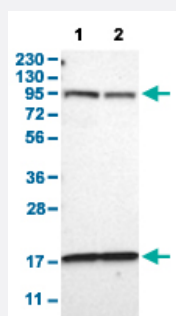


DPP8 polyclonal antibody

Catalog # PAB30561

Size 100 uL

Applications

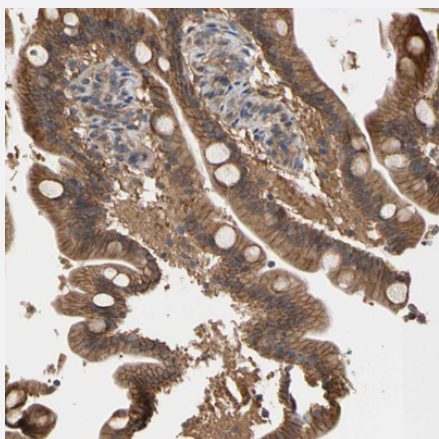


Western Blot (Cell lysate)

Western Blot analysis with DPP8 polyclonal antibody (Cat # PAB30561).

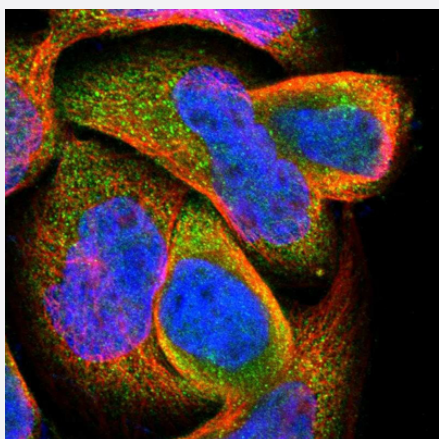
Lane 1: Human cell line RT-4

Lane 2: Human cell line U-251MG sp



Immunohistochemistry (Formalin/PFA-fixed paraffin-embedded sections)

Immunohistochemical staining (Formalin-fixed paraffin-embedded sections) of human duodenum with DPP8 polyclonal antibody (Cat # PAB30561) shows strong cytoplasmic and membranous positivity in glandular cells.



Immunofluorescence

Immunofluorescent staining of human cell line A-431 with DPP8 polyclonal antibody (Cat # PAB30561) shows positivity in cytoplasm. Antibody staining is shown in green.

Specification

Product Description	Rabbit polyclonal antibody raised against partial recombinant human DPP8.
Immunogen	Recombinant protein corresponding to amino acids 17-135 of human DPP8.
Sequence	MAAAMETEQLGVEIFETADCEENIESQDRPKLEPFYVERYSQLKKLLADTRKYHGYMMAKAP HDFMFVKRNDPDGPHSDRIYLLAMSGENRENTLFYSEIPKTINRAAVLMLSWKPL
Host	Rabbit
Reactivity	Human
Form	Liquid
Purification	Antigen affinity purification
Isotype	IgG
Recommend Usage	Immunofluorescence (1 - 4 ug/mL) Immunohistochemistry (Formalin/PFA-fixed paraffin-embedded sections) (1:20 - 1:50) Western Blot (1:100 - 1:250) The optimal working dilution should be determined by the end user.
Storage Buffer	In PBS, pH 7.2 (40% glycerol, 0.02% sodium azide).
Storage Instruction	Store at 4°C for short term storage. For long term storage store at -20°C. Aliquot to avoid repeated freezing and thawing.
Note	This product contains sodium azide: a POISONOUS AND HAZARDOUS SUBSTANCE which should be handled by trained staff only.

Applications

- Western Blot (Cell lysate)

Western Blot analysis with DPP8 polyclonal antibody (Cat # PAB30561).

Lane 1: Human cell line RT-4

Lane 2: Human cell line U-251MG sp

- Immunohistochemistry (Formalin/PFA-fixed paraffin-embedded sections)

Immunohistochemical staining (Formalin-fixed paraffin-embedded sections) of human duodenum with DPP8 polyclonal antibody (Cat # PAB30561) shows strong cytoplasmic and membranous positivity in glandular cells.

- Immunofluorescence

Immunofluorescent staining of human cell line A-431 with DPP8 polyclonal antibody (Cat # PAB30561) shows positivity in cytoplasm. Antibody staining is shown in green.

Gene Info — DPP8

Entrez GeneID [54878](#)

Protein Accession# [Q6V1X1](#)

Gene Name DPP8

Gene Alias DP8, DPRP1, FLJ14920, FLJ20283, MGC26191, MSTP141

Gene Description dipeptidyl-peptidase 8

Omim ID [606819](#)

Gene Ontology [Hyperlink](#)

Gene Summary This gene encodes a member of the peptidase S9B family, a small family of dipeptidyl peptidase s that are able to cleave peptide substrates at a prolyl bond. The encoded protein shares similarity with dipeptidyl peptidase IV in that it is ubiquitously expressed, and hydrolyzes the same substrates. These similarities suggest that, like dipeptidyl peptidase IV, this protein may play a role in T-cell activation and immune function. Alternatively spliced transcript variants encoding different isoforms have been described. [provided by RefSeq]

Other Designations dipeptidyl peptidase 8|dipeptidyl peptidase IV-related protein-1|dipeptidyl peptidase VIII|dipeptidyl peptidase 8|prolyl dipeptidase DPP8