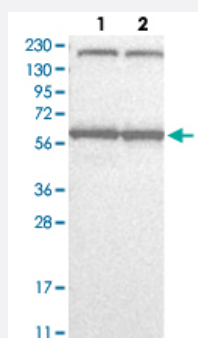


KPNA6 polyclonal antibody

Catalog # PAB30551

Size 100 uL

Applications

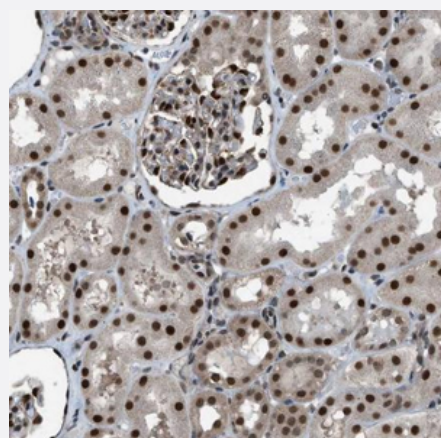


Western Blot (Cell lysate)

Western Blot analysis with KPNA6 polyclonal antibody (Cat # PAB30551)

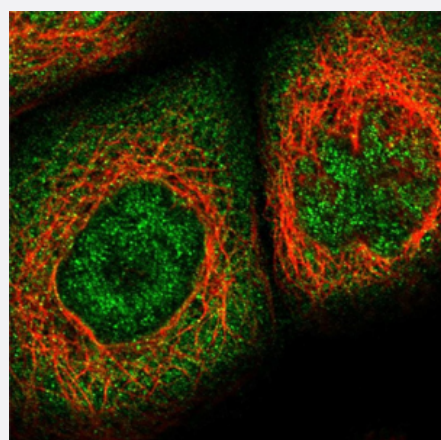
Lane 1: Human cell line RT-4

Lane 2: Human cell line U-251MG sp



Immunohistochemistry (Formalin/PFA-fixed paraffin-embedded sections)

Immunohistochemical staining (Formalin-fixed paraffin-embedded sections) of human kidney with KPNA6 polyclonal antibody (Cat # PAB30551) shows strong nuclear positivity in cells in tubules and cells in glomeruli.



Immunofluorescence

Immunofluorescent staining of human cell line A-431 with KPNA6 polyclonal antibody (Cat # PAB30551) shows positivity in cytoplasm and nucleus but excluded from the nucleoli. Antibody staining is shown in green.

Specification

Product Description	Rabbit polyclonal antibody raised against recombinant human KPNA6.
Immunogen	Recombinant protein corresponding to human KPNA6.
Sequence	RRREEEGIQLRKQKREQQLFKRRNVELINEEAAMFDSLLMDSYVSSTTGESVITREMVEMLFSDD SDLQLATTQKFR
Host	Rabbit
Reactivity	Human
Form	Liquid
Purification	Antigen affinity purification
Isotype	IgG
Recommend Usage	Immunohistochemistry (Formalin/PFA-fixed paraffin-embedded sections) (1:50-1:200) Western Blot (1:100-1:250) The optimal working dilution should be determined by the end user.
Storage Buffer	In PBS, pH 7.2 (40% glycerol, 0.02% sodium azide)
Storage Instruction	Store at 4°C. For long term storage store at -20°C. Aliquot to avoid repeated freezing and thawing.
Note	This product contains sodium azide: a POISONOUS AND HAZARDOUS SUBSTANCE which should be handled by trained staff only.

Applications

- Western Blot (Cell lysate)

Western Blot analysis with KPNA6 polyclonal antibody (Cat # PAB30551)

Lane 1: Human cell line RT-4

Lane 2: Human cell line U-251MG sp

- Immunohistochemistry (Formalin/PFA-fixed paraffin-embedded sections)

Immunohistochemical staining (Formalin-fixed paraffin-embedded sections) of human kidney with KPNA6 polyclonal antibody (Cat # PAB30551) shows strong nuclear positivity in cells in tubules and cells in glomeruli.

- Immunofluorescence

Immunofluorescent staining of human cell line A-431 with KPNA6 polyclonal antibody (Cat # PAB30551) shows positivity in cytoplasm and nucleus but excluded from the nucleoli. Antibody staining is shown in green.

Gene Info — KPNA6

Entrez GeneID [23633](#)

Protein Accession# [O60684](#)

Gene Name KPNA6

Gene Alias FLJ11249, IPOA7, KPNA7, MGC17918

Gene Description karyopherin alpha 6 (importin alpha 7)

Omim ID [610563](#)

Gene Ontology [Hyperlink](#)

Gene Summary

Nucleocytoplasmic transport, a signal- and energy-dependent process, takes place through nuclear pore complexes embedded in the nuclear envelope. The import of proteins containing a nuclear localization signal (NLS) requires the NLS import receptor, a heterodimer of importin alpha and beta subunits also known as karyopherins. Importin alpha binds the NLS-containing cargo in the cytoplasm and importin beta docks the complex at the cytoplasmic side of the nuclear pore complex. In the presence of nucleoside triphosphates and the small GTP binding protein Ran, the complex moves into the nuclear pore complex and the importin subunits dissociate. Importin alpha enters the nucleoplasm with its passenger protein and importin beta remains at the pore. The protein encoded by this gene is a member of the importin alpha family. [provided by RefSeq]

Other Designations OTTHUMP00000004532|importin alpha 7 subunit|importin-alpha-S2|karyopherin alpha 6