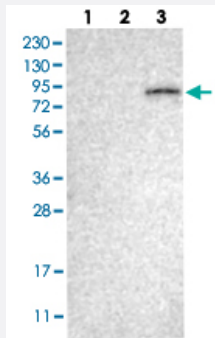


ELMO2 polyclonal antibody

Catalog # PAB30550

Size 100 uL

Applications



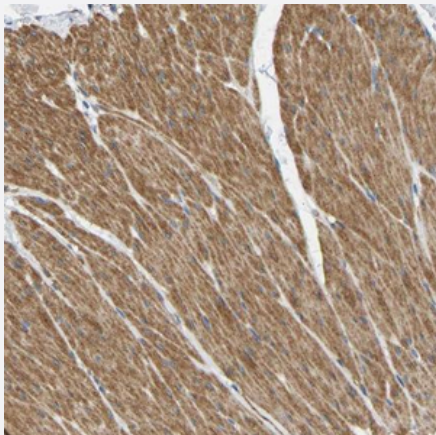
Western Blot (Cell lysate)

Western Blot (Cell lysate) analysis with ELMO2 polyclonal antibody (Cat # PAB30550)

Lane 1: Human cell line RT-4

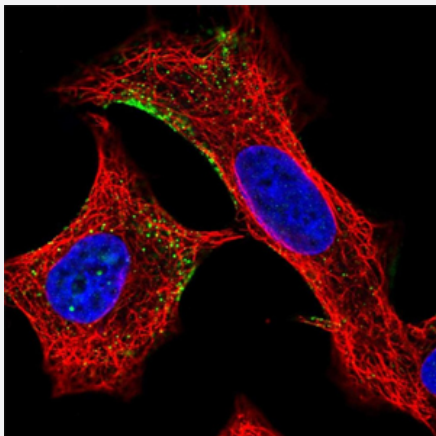
Lane 2: Human cell line U-251MG sp

Lane 3: Human plasma (IgG/HSA depleted)



Immunohistochemistry (Formalin/PFA-fixed paraffin-embedded sections)

Immunohistochemical staining (Formalin-fixed paraffin-embedded sections) of human smooth muscle with ELMO2 polyclonal antibody (Cat # PAB30550) shows cytoplasmic positivity in smooth muscle cells.



Immunofluorescence

Immunofluorescent staining of human cell line A549 with ELMO2 polyclonal antibody (Cat # PAB30550) shows positivity in cytoplasm. Antibody staining is shown in green.

Specification

Product Description	Rabbit polyclonal antibody raised against recombinant human ELMO2.
Immunogen	Recombinant protein corresponding to human ELMO2.
Sequence	CDGWSLPNPEYYTLRYADGPQLYTEQTRSDIKNGTILQLAISPSRAARQLMERTQSSNMETRLDA MKELAKLSAD
Host	Rabbit
Reactivity	Human
Form	Liquid
Purification	Antigen affinity purification
Isotype	IgG
Recommend Usage	Immunohistochemistry (Formalin/PFA-fixed paraffin-embedded sections) (1:20-1:50) Western Blot (1:100-1:250) The optimal working dilution should be determined by the end user.
Storage Buffer	In PBS, pH 7.2 (40% glycerol, 0.02% sodium azide)
Storage Instruction	Store at 4°C. For long term storage store at -20°C. Aliquot to avoid repeated freezing and thawing.
Note	This product contains sodium azide: a POISONOUS AND HAZARDOUS SUBSTANCE which should be handled by trained staff only.

Applications

- Western Blot (Cell lysate)

Western Blot (Cell lysate) analysis with ELMO2 polyclonal antibody (Cat # PAB30550)

Lane 1: Human cell line RT-4

Lane 2: Human cell line U-251MG sp

Lane 3: Human plasma (IgG/HSA depleted)

- Immunohistochemistry (Formalin/PFA-fixed paraffin-embedded sections)

Immunohistochemical staining (Formalin-fixed paraffin-embedded sections) of human smooth muscle with ELMO2 polyclonal antibody (Cat # PAB30550) shows cytoplasmic positivity in smooth muscle cells.

- Immunofluorescence

Immunofluorescent staining of human cell line A549 with ELMO2 polyclonal antibody (Cat # PAB30550) shows positivity in cytoplasm. Antibody staining is shown in green.

Gene Info — ELMO2

Entrez GeneID [63916](#)

Protein Accession# [Q96JJ3](#)

Gene Name ELMO2

Gene Alias CED-12, CED12, ELMO-2, FLJ11656, KIAA1834

Gene Description engulfment and cell motility 2

Omim ID [606421](#)

Gene Ontology [Hyperlink](#)

Gene Summary The protein encoded by this gene interacts with the dedicator of cyto-kinesis 1 protein. Similarity to a C. elegans protein suggests that this protein may function in phagocytosis of apoptotic cells and in cell migration. Alternative splicing results in multiple transcript variants encoding the same protein. [provided by RefSeq]

Other Designations OTTHUMP00000031762|PH domain protein CED12A|ced-12 homolog 2

Disease

- [Diabetes Mellitus](#)
- [Diabetic Nephropathies](#)
- [Genetic Predisposition to Disease](#)
- [Kidney Failure](#)