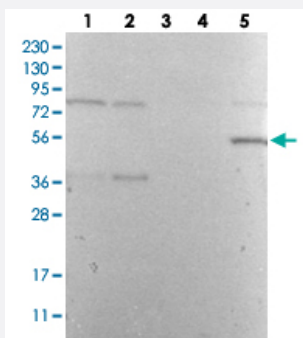


DES polyclonal antibody

Catalog # PAB30549

Size 100 uL

Applications



Western Blot

Western Blot analysis with DES polyclonal antibody (Cat # PAB30549)

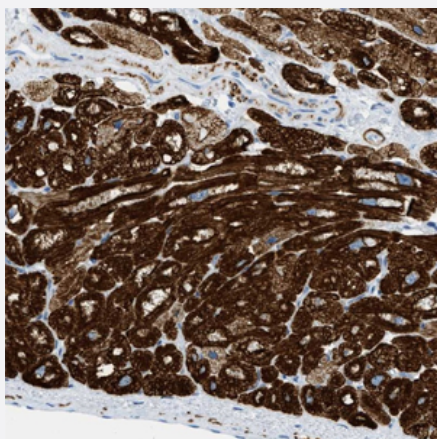
Lane 1: Human cell line RT-4

Lane 2: Human cell line U-251MG sp

Lane 3: Human plasma (IgG/HSA depleted)

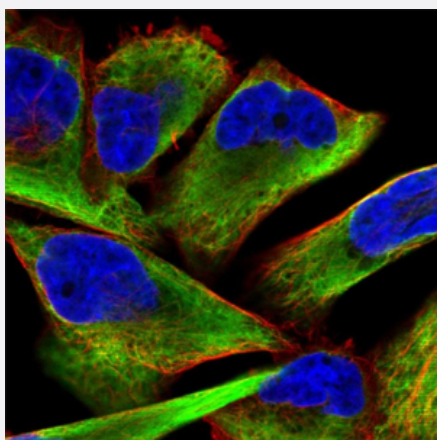
Lane 4: Human liver tissue

Lane 5: Human tonsil tissue



Immunohistochemistry (Formalin/PFA-fixed paraffin-embedded sections)

Immunohistochemical staining (Formalin-fixed paraffin-embedded sections) of human heart muscle with DES polyclonal antibody (Cat # PAB30549) shows strong cytoplasmic positivity in myocytes.



Immunofluorescence

Immunofluorescent staining of human cell line RH-30 with DES polyclonal antibody (Cat # PAB30549) shows positivity in intermediate filaments. Antibody staining is shown in green.

Specification

Product Description	Rabbit polyclonal antibody raised against recombinant human DES.
Immunogen	Recombinant protein corresponding to human DES.
Sequence	KLLEGEESRINLPITYSALNFRETSPEQRGSEVHTKKTVMIKTIETRDGEVVSEATQQQHEVL
Host	Rabbit
Reactivity	Human
Form	Liquid
Purification	Antigen affinity purification
Isotype	IgG
Recommend Usage	Immunohistochemistry (Formalin/PFA-fixed paraffin-embedded sections) (1:200-1:500) Western Blot (1:100-1:250) The optimal working dilution should be determined by the end user.
Storage Buffer	In PBS, pH 7.2 (40% glycerol, 0.02% sodium azide)
Storage Instruction	Store at 4°C. For long term storage store at -20°C. Aliquot to avoid repeated freezing and thawing.
Note	This product contains sodium azide: a POISONOUS AND HAZARDOUS SUBSTANCE which should be handled by trained staff only.

Applications

- Western Blot

Western Blot analysis with DES polyclonal antibody (Cat # PAB30549)

Lane 1: Human cell line RT-4

Lane 2: Human cell line U-251MG sp

Lane 3: Human plasma (IgG/HSA depleted)

Lane 4: Human liver tissue

Lane 5: Human tonsil tissue

- Immunohistochemistry (Formalin/PFA-fixed paraffin-embedded sections)

Immunohistochemical staining (Formalin-fixed paraffin-embedded sections) of human heart muscle with DES polyclonal antibody (Cat # PAB30549) shows strong cytoplasmic positivity in myocytes.

- Immunofluorescence

Immunofluorescent staining of human cell line RH-30 with DES polyclonal antibody (Cat # PAB30549) shows positivity in intermediate filaments. Antibody staining is shown in green.

Gene Info — DES

Entrez GeneID	1674
Protein Accession#	P17661
Gene Name	DES
Gene Alias	CMD1I, CSM1, CSM2, FLJ12025, FLJ39719, FLJ41013, FLJ41793
Gene Description	desmin
Omim ID	125660 601419 604765
Gene Ontology	Hyperlink
Gene Summary	This gene encodes a muscle-specific class III intermediate filament. Homopolymers of this protein form a stable intracytoplasmic filamentous network connecting myofibrils to each other and to the plasma membrane. Mutations in this gene are associated with desmin-related myopathy, a familial cardiac and skeletal myopathy (CSM), and with distal myopathies. [provided by RefSeq]
Other Designations	OTTHUMP00000064865 intermediate filament protein

Pathway

- [Arrhythmogenic right ventricular cardiomyopathy \(ARVC\)](#)
- [Hypertrophic cardiomyopathy \(HCM\)](#)

Disease

- [Cardiomyopathy](#)
- [Cardiovascular Diseases](#)
- [Diabetes Mellitus](#)
- [Edema](#)