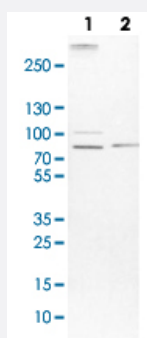


# MAP4K5 polyclonal antibody

Catalog # PAB30532      Size 100 uL

## Applications

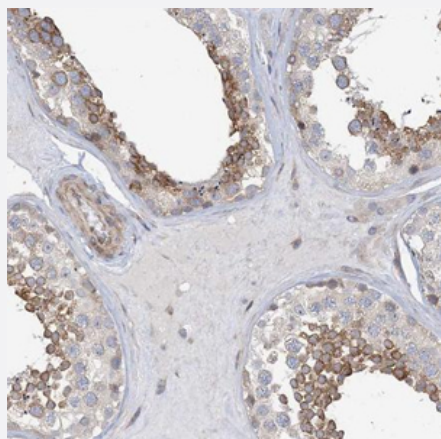


### Western Blot (Cell lysate)

Western Blot (Cell lysate) analysis with MAP4K5 polyclonal antibody (Cat # PAB30532)

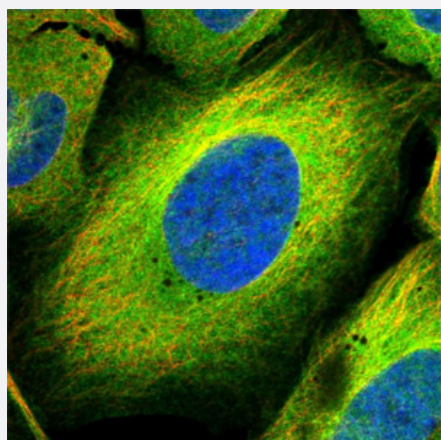
Lane 1: NIH-3T3 cell lysate (Mouse embryonic fibroblast cells)

Lane 2: NBT-II cell lysate (Rat Wistar bladder tumour cells)



### Immunohistochemistry (Formalin/PFA-fixed paraffin-embedded sections)

Immunohistochemical staining (Formalin-fixed paraffin-embedded sections) of human testis with MAP4K5 polyclonal antibody (Cat # PAB30532) shows moderate positivity in a subset of cells in seminiferous ducts.



### Immunofluorescence

Immunofluorescent staining of human cell line U-2 OS with MAP4K5 polyclonal antibody (Cat # PAB30532) shows positivity in plasma membrane and cytoplasm. Antibody staining is shown in green.

## Specification

<b>Product Description</b>	Rabbit polyclonal antibody raised against recombinant human MAP4K5.
<b>Immunogen</b>	Recombinant protein corresponding to human MAP4K5.
<b>Sequence</b>	YPEDNFPDEEKASTIKHCPDSESRAPQLRRQSSPSCGPVAETSSIGNGDGISKLMSENTEGSAQ APQLPRKKDKRDFPKPA
<b>Host</b>	Rabbit
<b>Reactivity</b>	Human, Mouse, Rat
<b>Form</b>	Liquid
<b>Purification</b>	Antigen affinity purification
<b>Isotype</b>	IgG
<b>Recommend Usage</b>	Immunohistochemistry (Formalin/PFA-fixed paraffin-embedded sections) (1:50-1:200) Western Blot (1:100-1:250) The optimal working dilution should be determined by the end user.
<b>Storage Buffer</b>	In PBS, pH 7.2 (40% glycerol, 0.02% sodium azide)
<b>Storage Instruction</b>	Store at 4°C. For long term storage store at -20°C. Aliquot to avoid repeated freezing and thawing.
<b>Note</b>	This product contains sodium azide: a POISONOUS AND HAZARDOUS SUBSTANCE which should be handled by trained staff only.

## Applications

- Western Blot (Cell lysate)

Western Blot (Cell lysate) analysis with MAP4K5 polyclonal antibody (Cat # PAB30532)

Lane 1: NIH-3T3 cell lysate (Mouse embryonic fibroblast cells)

Lane 2: NBT-II cell lysate (Rat Wistar bladder tumour cells)

- Immunohistochemistry (Formalin/PFA-fixed paraffin-embedded sections)

Immunohistochemical staining (Formalin-fixed paraffin-embedded sections) of human testis with MAP4K5 polyclonal antibody (Cat # PAB30532) shows moderate positivity in a subset of cells in seminiferous ducts.

- Immunofluorescence

Immunofluorescent staining of human cell line U-2 OS with MAP4K5 polyclonal antibody (Cat # PAB30532) shows positivity in plasma membrane and cytoplasm. Antibody staining is shown in green.

## Gene Info — MAP4K5

**Entrez GeneID** [11183](#)**Gene Name** MAP4K5**Gene Alias** GCKR, KHS, KHS1, MAPKKKK5**Gene Description** mitogen-activated protein kinase kinase kinase kinase 5**Omim ID** [604923](#)**Gene Ontology** [Hyperlink](#)

**Gene Summary** This gene encodes a member of the serine/threonine protein kinase family, that is highly similar to yeast SPS1/STE20 kinase. Yeast SPS1/STE20 functions near the beginning of the MAP kinase signal cascades that is essential for yeast pheromone response. This kinase was shown to activate Jun kinase in mammalian cells, which suggested a role in stress response. Two alternatively spliced transcript variants encoding the same protein have been described for this gene. [provided by RefSeq]

**Other Designations** germinal center kinase-related|kinase homologous to SPS1/STE20

## Disease

- [Kidney Failure](#)