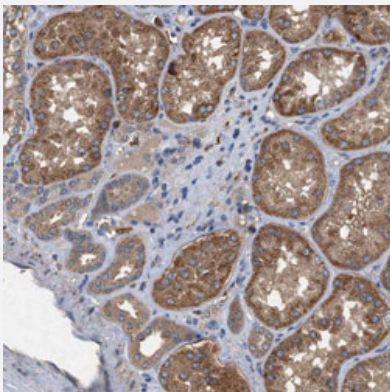


PFTK2 polyclonal antibody

Catalog # PAB30511 Size 100 uL

Applications



Immunohistochemistry (Formalin/PFA-fixed paraffin-embedded sections)

Immunohistochemical staining (Formalin-fixed paraffin-embedded sections) of human kidney with PFTK2 polyclonal antibody (Cat # PAB30511) shows cytoplasmic positivity in renal tubules at 1:20-1:50 dilution.

Specification

| | |
|---------------------|--|
| Product Description | Rabbit polyclonal antibody raised against partial recombinant human PFTK2. |
| Immunogen | Recombinant protein corresponding to human PFTK2. |
| Sequence | PRSLHV VWNRLGRVPEAEDLASQMLKGFPRDRVSAQEALVHDYFSALPSQLYQLPDEESLFTV SGVRLKPEMCDLLASYQKGHPA |
| Host | Rabbit |
| Reactivity | Human |
| Form | Liquid |
| Purification | Antigen affinity purification |
| Isotype | IgG |
| Recommend Usage | Immunohistochemistry (Formalin/PFA-fixed paraffin-embedded sections) (1:20-1:50) The optimal working dilution should be determined by the end user. |
| Storage Buffer | In PBS, pH 7.2 (40% glycerol, 0.02% sodium azide). |

Storage Instruction

Store at 4°C. For long term storage store at -20°C.
Aliquot to avoid repeated freezing and thawing.

Note

This product contains sodium azide: a POISONOUS AND HAZARDOUS SUBSTANCE which should be handled by trained staff only.

Applications

- Immunohistochemistry (Formalin/PFA-fixed paraffin-embedded sections)

Immunohistochemical staining (Formalin-fixed paraffin-embedded sections) of human kidney with PFTK2 polyclonal antibody (Cat # PAB30511) shows cytoplasmic positivity in renal tubules at 1:20-1:50 dilution.

Gene Info — PFTK2

Entrez GeneID[65061](#)**Protein Accession#**[Q96Q40](#)**Gene Name**

PFTK2

Gene Alias

ALS2CR7

Gene Description

PFTAIRE protein kinase 2

Gene Ontology[Hyperlink](#)**Gene Summary**

candidate 7

Other Designations

amyotrophic lateral sclerosis 2 (juvenile) chromosome region, candidate 7