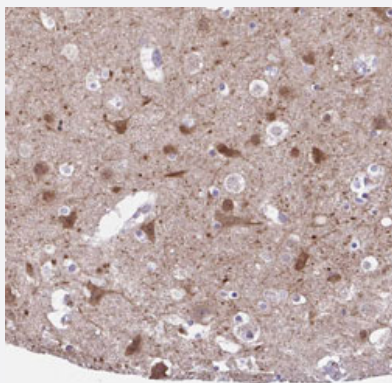


DCLK2 polyclonal antibody

Catalog # PAB30510

Size 100 uL

Applications



Immunohistochemistry (Formalin/PFA-fixed paraffin-embedded sections)

Immunohistochemical staining (Formalin-fixed paraffin-embedded sections) of human cerebral cortex with DCLK2 polyclonal antibody (Cat # PAB30510) shows moderate cytoplasmic positivity in neuronal cells at 1:50-1:200 dilution.

Specification

Product Description	Rabbit polyclonal antibody raised against partial recombinant human DCLK2.
Immunogen	Recombinant protein corresponding to human DCLK2.
Sequence	ENNMQAEVTGKLKQHFNNALPKQNSTTTGVSVIMNTALDKEGQIFCSKHCQDSGRPGMEPISPV PPSVEEIPVGEAVPAPTPPESPTPHCPPAAPGGERAG
Host	Rabbit
Reactivity	Human
Form	Liquid
Purification	Antigen affinity purification
Isotype	IgG
Recommend Usage	Immunohistochemistry (Formalin/PFA-fixed paraffin-embedded sections) (1:50-1:200) The optimal working dilution should be determined by the end user.
Storage Buffer	In PBS, pH 7.2 (40% glycerol, 0.02% sodium azide).

Storage Instruction

Store at 4°C. For long term storage store at -20°C.
Aliquot to avoid repeated freezing and thawing.

Note

This product contains sodium azide: a POISONOUS AND HAZARDOUS SUBSTANCE which should be handled by trained staff only.

Applications

- Immunohistochemistry (Formalin/PFA-fixed paraffin-embedded sections)

Immunohistochemical staining (Formalin-fixed paraffin-embedded sections) of human cerebral cortex with DCLK2 polyclonal antibody (Cat # PAB30510) shows moderate cytoplasmic positivity in neuronal cells at 1:50-1:200 dilution.

Gene Info — DCLK2

Entrez GeneID[166614](#)**Protein Accession#**[Q8N568](#)**Gene Name**

DCLK2

Gene Alias

DCAMKL2, DCDC3, DCDC3B, DCK2, DKFZp761I032, MGC45428

Gene Description

doublecortin-like kinase 2

Gene Ontology[Hyperlink](#)**Other Designations**

doublecortin and CaM kinase-like 2