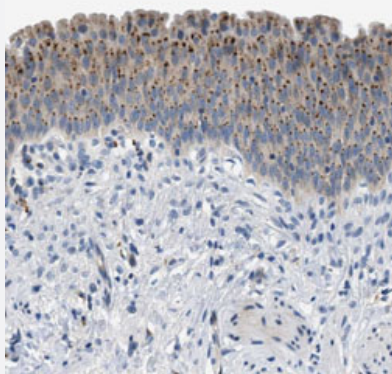


EMR3 polyclonal antibody

Catalog # PAB30504

Size 100 uL

Applications



Immunohistochemistry (Formalin/PFA-fixed paraffin-embedded sections)

Immunohistochemical staining (Formalin-fixed paraffin-embedded sections) of human urinary bladder with EMR3 polyclonal antibody (Cat # PAB30504) shows dot like cytoplasmic positivity in urothelial cells at 1:50-1:200 dilution.

Specification

Product Description	Rabbit polyclonal antibody raised against partial recombinant human EMR3.
Immunogen	Recombinant protein corresponding to human EMR3.
Sequence	NASCVNNTHTCTCNHGYTSGSGQKLFTFPLETCNDINECTPPYSVYCGFNAVCYNVEGSFYCQCV PGYRLHSGNEQFSNSNENTCQDTTSSKTTEGRKELQKIVDKFESLLTNQTLWRTEGRQEISSTATT ILRDVESKVL
Host	Rabbit
Reactivity	Human
Form	Liquid
Purification	Antigen affinity purification
Isotype	IgG
Recommend Usage	Immunohistochemistry (Formalin/PFA-fixed paraffin-embedded sections) (1:50-1:200) The optimal working dilution should be determined by the end user.

Storage Buffer	In PBS, pH 7.2 (40% glycerol, 0.02% sodium azide).
Storage Instruction	Store at 4°C. For long term storage store at -20°C. Aliquot to avoid repeated freezing and thawing.
Note	This product contains sodium azide: a POISONOUS AND HAZARDOUS SUBSTANCE which should be handled by trained staff only.

Applications

- Immunohistochemistry (Formalin/PFA-fixed paraffin-embedded sections)

Immunohistochemical staining (Formalin-fixed paraffin-embedded sections) of human urinary bladder with EMR3 polyclonal antibody (Cat # PAB30504) shows dot like cytoplasmic positivity in urothelial cells at 1:50-1:200 dilution.

Gene Info — EMR3

Entrez GeneID	84658
Protein Accession#	Q9BY15
Gene Name	EMR3
Gene Alias	-
Gene Description	egf-like module containing, mucin-like, hormone receptor-like 3
Omim ID	606101
Gene Ontology	Hyperlink
Gene Summary	This gene encodes a member of the class B seven-span transmembrane (TM7) receptor family expressed predominantly by cells of the immune system. Family members are characterized by an extended extracellular region with a variable number of N-terminal epidermal growth factor (EGF)-like domains coupled to a TM7 domain via a mucin-like spacer domain. This gene is closely linked to the gene encoding egf-like molecule containing mucin-like hormone receptor 2 on chromosome 19. This protein may play a role in myeloid-myeloid interactions during immune and inflammatory responses. [provided by RefSeq]
Other Designations	egf-like module-containing mucin-like receptor 3