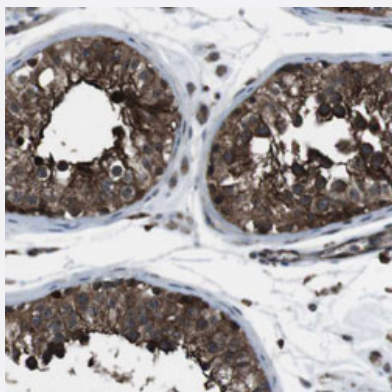


GDF10 polyclonal antibody

Catalog # PAB30500

Size 100 uL

Applications



Immunohistochemistry (Formalin/PFA-fixed paraffin-embedded sections)

Immunohistochemical staining (Formalin-fixed paraffin-embedded sections) of human testis with GDF10 polyclonal antibody (Cat # PAB30500) shows strong cytoplasmic positivity in cells of seminiferous ducts at 1:20-1:50 dilution.

Specification

Product Description	Rabbit polyclonal antibody raised against partial recombinant human GDF10.
Immunogen	Recombinant protein corresponding to human GDF10.
Sequence	ISEPNSVAVTLQRYDPFPAGDPEPRAAPNNSADPRVRRAAQATGPLQDNELPGLDERPPRAHA QHFHKKHQLWSPSPFRALKPRPGRKDRRKKGQEVFMAASQVLDFDEKTMQKA
Host	Rabbit
Reactivity	Human
Form	Liquid
Purification	Antigen affinity purification
Isotype	IgG
Recommend Usage	Immunohistochemistry (Formalin/PFA-fixed paraffin-embedded sections) (1:20-1:50) The optimal working dilution should be determined by the end user.
Storage Buffer	In PBS, pH 7.2 (40% glycerol, 0.02% sodium azide).

Storage Instruction

Store at 4°C. For long term storage store at -20°C.
Aliquot to avoid repeated freezing and thawing.

Note

This product contains sodium azide: a POISONOUS AND HAZARDOUS SUBSTANCE which should be handled by trained staff only.

Applications

- Immunohistochemistry (Formalin/PFA-fixed paraffin-embedded sections)

Immunohistochemical staining (Formalin-fixed paraffin-embedded sections) of human testis with GDF10 polyclonal antibody (Cat # PAB30500) shows strong cytoplasmic positivity in cells of seminiferous ducts at 1:20-1:50 dilution.

Gene Info — GDF10

Entrez GeneID[2662](#)**Protein Accession#**[P55107](#)**Gene Name**

GDF10

Gene Alias

BMP-3b, BMP3B

Gene Description

growth differentiation factor 10

Omim ID[601361](#)**Gene Ontology**[Hyperlink](#)**Gene Summary**

The protein encoded by this gene is a member of the bone morphogenetic protein (BMP) family and the TGF-beta superfamily. This group of proteins is characterized by a polybasic proteolytic processing site which is cleaved to produce a mature protein containing seven conserved cysteine residues. The members of this family are regulators of cell growth and differentiation in both embryonic and adult tissues. Studies in mice suggest that the protein encoded by this gene plays a role in skeletal morphogenesis. [provided by RefSeq]

Other Designations

OTTHUMP00000019534|bone morphogenetic protein 3B

Disease

- [Alzheimer Disease](#)
- [Genetic Predisposition to Disease](#)
- [Obesity](#)

- [Ovarian Failure](#)
- [Polycystic Ovary Syndrome](#)
- [Puberty](#)
- [Thrombophilia](#)
- [Tobacco Use Disorder](#)