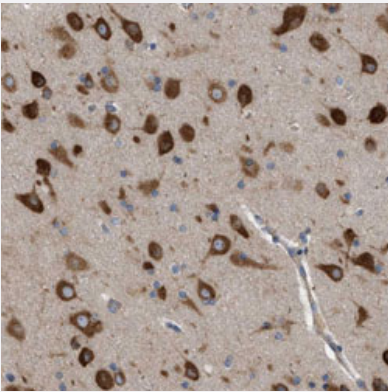


IL1RL2 polyclonal antibody

Catalog # PAB30498

Size 100 uL

Applications



Immunohistochemistry (Formalin/PFA-fixed paraffin-embedded sections)

Immunohistochemical staining (Formalin-fixed paraffin-embedded sections) of human cerebral cortex with IL1RL2 polyclonal antibody (Cat # PAB30498) shows strong cytoplasmic positivity in neuronal cells at 1:50-1:200 dilution.

Specification

Product Description	Rabbit polyclonal antibody raised against partial recombinant human IL1RL2.
Immunogen	Recombinant protein corresponding to human IL1RL2.
Sequence	QAILTHSGKQYEVLNGITVSITERAGYGGSVPKIYPKNHSIEVQLGTTLMDCNVTDTKDNTNLRWCVRVNNTLVDDYYDESKRIREGVETHVSFREHNLYTVNITFLEVKMEDYGLPFMCHAG
Host	Rabbit
Reactivity	Human
Form	Liquid
Purification	Antigen affinity purification
Isotype	IgG
Recommend Usage	Immunohistochemistry (Formalin/PFA-fixed paraffin-embedded sections) (1:50-1:200) The optimal working dilution should be determined by the end user.
Storage Buffer	In PBS, pH 7.2 (40% glycerol, 0.02% sodium azide).

Storage Instruction

Store at 4°C. For long term storage store at -20°C.
Aliquot to avoid repeated freezing and thawing.

Note

This product contains sodium azide: a POISONOUS AND HAZARDOUS SUBSTANCE which should be handled by trained staff only.

Applications

- Immunohistochemistry (Formalin/PFA-fixed paraffin-embedded sections)

Immunohistochemical staining (Formalin-fixed paraffin-embedded sections) of human cerebral cortex with IL1RL2 polyclonal antibody (Cat # PAB30498) shows strong cytoplasmic positivity in neuronal cells at 1:50-1:200 dilution.

Gene Info — IL1RL2

Entrez GeneID[8808](#)**Protein Accession#**[Q9HB29](#)**Gene Name**

IL1RL2

Gene Alias

IL1R-rp2, IL1RRP2

Gene Description

interleukin 1 receptor-like 2

Omim ID[604512](#)**Gene Ontology**[Hyperlink](#)**Gene Summary**

The protein encoded by this gene is a member of the interleukin 1 receptor family. An experiment with transient gene expression demonstrated that this receptor was incapable of binding to interleukin 1 alpha and interleukin 1 beta with high affinity. This gene and four other interleukin 1 receptor family genes, including interleukin 1 receptor, type I (IL1R1), interleukin 1 receptor, type II (IL1R2), interleukin 1 receptor-like 1 (IL1RL1), and interleukin 18 receptor 1 (IL18R1), form a cytokine receptor gene cluster in a region mapped to chromosome 2q12. [provided by RefSeq]

Other Designations

interleukin-1 receptor-related protein 2

Disease

- [Genetic Predisposition to Disease](#)
- [Hematologic Diseases](#)
- [Intervertebral Disk Displacement](#)

- [Kidney Failure](#)
- [Occupational Diseases](#)
- [Osteoarthritis](#)