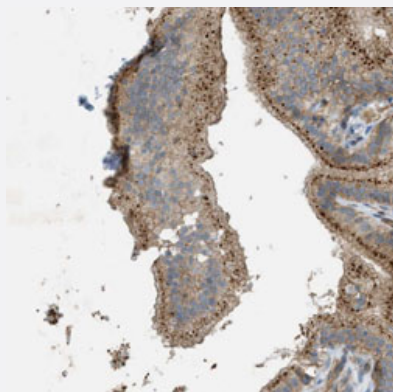


GRK6 polyclonal antibody

Catalog # PAB30495

Size 100 uL

Applications



Immunohistochemistry (Formalin/PFA-fixed paraffin-embedded sections)

Immunohistochemical staining (Formalin-fixed paraffin-embedded sections) of human gallbladder with GRK6 polyclonal antibody (Cat # PAB30495) shows dot like cytoplasmic positivity in glandular cells at 1:50-1:200 dilution.

Specification

Product Description	Rabbit polyclonal antibody raised against partial recombinant human GRK6.
Immunogen	Recombinant protein corresponding to human GRK6.
Sequence	MIAGQSPFQQRKKKIKREEVERLVKEVPPEEYSERFSPQARSLCSQLLCKDPAERLGCRGGSARE VKEHPLFKKLNFK
Host	Rabbit
Reactivity	Human
Form	Liquid
Purification	Antigen affinity purification
Isotype	IgG
Recommend Usage	Immunohistochemistry (Formalin/PFA-fixed paraffin-embedded sections) (1:50-1:200) The optimal working dilution should be determined by the end user.
Storage Buffer	In PBS, pH 7.2 (40% glycerol, 0.02% sodium azide).

Storage Instruction

Store at 4°C. For long term storage store at -20°C.
Aliquot to avoid repeated freezing and thawing.

Note

This product contains sodium azide: a POISONOUS AND HAZARDOUS SUBSTANCE which should be handled by trained staff only.

Applications

- Immunohistochemistry (Formalin/PFA-fixed paraffin-embedded sections)

Immunohistochemical staining (Formalin-fixed paraffin-embedded sections) of human gallbladder with GRK6 polyclonal antibody (Cat # PAB30495) shows dot like cytoplasmic positivity in glandular cells at 1:50-1:200 dilution.

Gene Info — GRK6

Entrez GeneID[2870](#)**Protein Accession#**[P43250](#)**Gene Name**

GRK6

Gene Alias

FLJ32135, GPRK6

Gene Description

G protein-coupled receptor kinase 6

Omim ID[600869](#)**Gene Ontology**[Hyperlink](#)**Gene Summary**

This gene encodes a member of the guanine nucleotide-binding protein (G protein)-coupled receptor kinase subfamily of the Ser/Thr protein kinase family. The protein phosphorylates the activated forms of G protein-coupled receptors thus initiating their deactivation. Several transcript variants encoding different isoforms have been described for this gene. [provided by RefSeq]

Other Designations

-

Pathway

- [Chemokine signaling pathway](#)
- [Endocytosis](#)

Disease

- [Anorexia Nervosa](#)
- [Bulimia](#)
- [Cardiovascular Diseases](#)
- [Diabetes Mellitus](#)
- [Edema](#)
- [Genetic Predisposition to Disease](#)
- [Hyperparathyroidism](#)