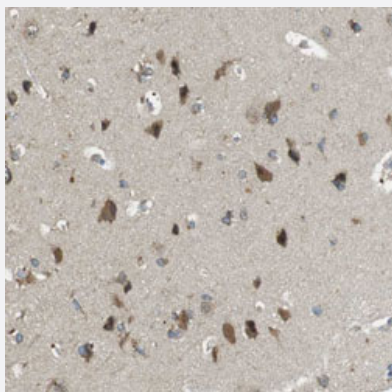


BRI3BP polyclonal antibody

Catalog # PAB30494 Size 100 uL

Applications



Immunohistochemistry (Formalin/PFA-fixed paraffin-embedded sections)

Immunohistochemical staining (Formalin-fixed paraffin-embedded sections) of human cerebral cortex with BRI3BP polyclonal antibody (Cat # PAB30494) shows strong cytoplasmic positivity in neuronal cells at 1:20-1:50 dilution.

Specification

Product Description	Rabbit polyclonal antibody raised against partial recombinant human BRI3BP.
Immunogen	Recombinant protein corresponding to human BRI3BP.
Sequence	MFVETLWKVWTELLDVLGLDVSNLSQYFSPASVSSSPARALLLVGVV
Host	Rabbit
Reactivity	Human
Form	Liquid
Purification	Antigen affinity purification
Isotype	IgG
Recommend Usage	Immunohistochemistry (Formalin/PFA-fixed paraffin-embedded sections) (1:20-1:50) The optimal working dilution should be determined by the end user.
Storage Buffer	In PBS, pH 7.2 (40% glycerol, 0.02% sodium azide).

Storage Instruction

Store at 4°C. For long term storage store at -20°C.
Aliquot to avoid repeated freezing and thawing.

Note

This product contains sodium azide: a POISONOUS AND HAZARDOUS SUBSTANCE which should be handled by trained staff only.

Applications

- Immunohistochemistry (Formalin/PFA-fixed paraffin-embedded sections)

Immunohistochemical staining (Formalin-fixed paraffin-embedded sections) of human cerebral cortex with BRI3BP polyclonal antibody (Cat # PAB30494) shows strong cytoplasmic positivity in neuronal cells at 1:20-1:50 dilution.

Gene Info — BRI3BP

Entrez GeneID[140707](#)**Protein Accession#**[Q8WY22](#)**Gene Name**

BRI3BP

Gene Alias

BNAS1, HCCR-2, KG19

Gene Description

BRI3 binding protein

Gene Ontology[Hyperlink](#)**Other Designations**

BRI3-binding protein|cervical cancer 1 proto-oncogene-binding protein|cervical cancer oncogene binding protein