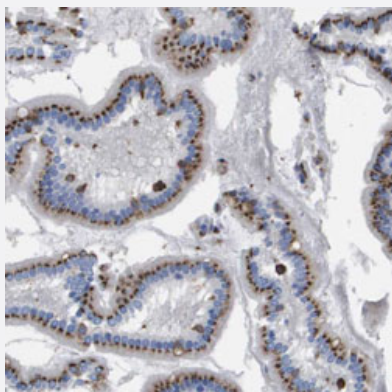


# SLC37A2 polyclonal antibody

Catalog # PAB30493

Size 100 uL

## Applications



### Immunohistochemistry (Formalin/PFA-fixed paraffin-embedded sections)

Immunohistochemical staining (Formalin-fixed paraffin-embedded sections) of human duodenum with SLC37A2 polyclonal antibody (Cat # PAB30493) shows strong granular cytoplasmic positivity in glandular cells at 1:20-1:50 dilution.

## Specification

Product Description	Rabbit polyclonal antibody raised against partial recombinant human SLC37A2.
Immunogen	Recombinant protein corresponding to human SLC37A2.
Sequence	RKPISVKSR LHQNCSEQIKPINDTHSLNDTMWCSWAPFDKDNKYKE
Host	Rabbit
Reactivity	Human
Form	Liquid
Purification	Antigen affinity purification
Isotype	IgG
Recommend Usage	Immunohistochemistry (Formalin/PFA-fixed paraffin-embedded sections) (1:20-1:50) The optimal working dilution should be determined by the end user.
Storage Buffer	In PBS, pH 7.2 (40% glycerol, 0.02% sodium azide).

**Storage Instruction**

Store at 4°C. For long term storage store at -20°C.  
Aliquot to avoid repeated freezing and thawing.

**Note**

This product contains sodium azide: a POISONOUS AND HAZARDOUS SUBSTANCE which should be handled by trained staff only.

## Applications

- Immunohistochemistry (Formalin/PFA-fixed paraffin-embedded sections)

Immunohistochemical staining (Formalin-fixed paraffin-embedded sections) of human duodenum with SLC37A2 polyclonal antibody (Cat # PAB30493) shows strong granular cytoplasmic positivity in glandular cells at 1:20-1:50 dilution.

## Gene Info — SLC37A2

**Entrez GeneID**[219855](#)**Protein Accession#**[Q8TED4](#)**Gene Name**

SLC37A2

**Gene Alias**

FLJ00171, MGC71430, pp11662

**Gene Description**

solute carrier family 37 (glycerol-3-phosphate transporter), member 2

**Gene Ontology**[Hyperlink](#)**Gene Summary**

O

**Other Designations**

-