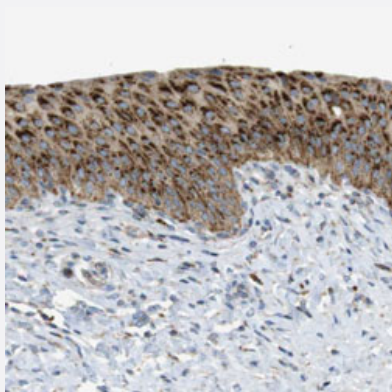


# LAMP1 polyclonal antibody

Catalog # PAB30490

Size 100 uL

## Applications



### Immunohistochemistry (Formalin/PFA-fixed paraffin-embedded sections)

Immunohistochemical staining (Formalin-fixed paraffin-embedded sections) of human urinary bladder with LAMP1 polyclonal antibody (Cat # PAB30490) shows strong granular positivity in urothelial cells at 1:50-1:200 dilution.

## Specification

|                     |   |
|---------------------|---|
| Product Description | Rabbit polyclonal antibody raised against partial recombinant human LAMP1.  |
| Immunogen           | Recombinant protein corresponding to human LAMP1.   |
| Sequence            | SPVPKSPSVDKYNVSGTNGTCLLASMGQLQLNTYERKDNTTVTRLLNINPNKTSASGSCGAHLVTL<br>ELHSEGTTVLLFQFGMNASSRFFLQGIQLNTILPDARDPAFKAANGSLRALQATVGNSYKCN                    |
| Host                | Rabbit  |
| Reactivity          | Human   |
| Form                | Liquid  |
| Purification        | Antigen affinity purification   |
| Isotype             | IgG   |
| Recommend Usage     | Immunohistochemistry (Formalin/PFA-fixed paraffin-embedded sections) (1:50-1:200)<br>The optimal working dilution should be determined by the end user. |
| Storage Buffer      | In PBS, pH 7.2 (40% glycerol, 0.02% sodium azide).  |

**Storage Instruction**

Store at 4°C. For long term storage store at -20°C.  
Aliquot to avoid repeated freezing and thawing.

**Note**

This product contains sodium azide: a POISONOUS AND HAZARDOUS SUBSTANCE which should be handled by trained staff only.

## Applications

- Immunohistochemistry (Formalin/PFA-fixed paraffin-embedded sections)

Immunohistochemical staining (Formalin-fixed paraffin-embedded sections) of human urinary bladder with LAMP1 polyclonal antibody (Cat # PAB30490) shows strong granular positivity in urothelial cells at 1:50-1:200 dilution.

## Gene Info — LAMP1

**Entrez GeneID** [3916](#)

**Protein Accession#** [P11279](#)

**Gene Name** LAMP1

**Gene Alias** CD107a, LAMPA, LGP120

**Gene Description** lysosomal-associated membrane protein 1

**Omim ID** [153330](#)

**Gene Ontology** [Hyperlink](#)

**Gene Summary** The protein encoded by this gene is a member of a family of membrane glycoproteins. This glycoprotein provides selectins with carbohydrate ligands. It may also play a role in tumor cell metastasis. [provided by RefSeq]

**Other Designations** OTTHUMP00000040663

## Pathway

- [Lysosome](#)