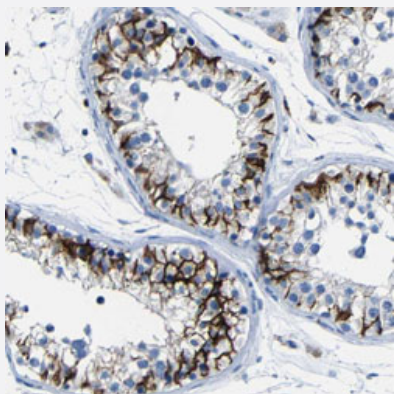


# CLDN11 polyclonal antibody

Catalog # PAB30462      Size 100 uL

## Applications



### Immunohistochemistry (Formalin/PFA-fixed paraffin-embedded sections)

Immunohistochemical staining (Formalin-fixed paraffin-embedded sections) of human testis with CLDN11 polyclonal antibody (Cat # PAB30462) shows strong membranous positivity in cells in seminiferous ducts at 1:50-1:200 dilution.

## Specification

<b>Product Description</b>	Rabbit polyclonal antibody raised against partial recombinant human CLDN11.
<b>Immunogen</b>	Recombinant protein corresponding to human CLDN11.
<b>Sequence</b>	DAQAFGENRFYYTAGSSSPTHAKSAHV
<b>Host</b>	Rabbit
<b>Reactivity</b>	Human
<b>Form</b>	Liquid
<b>Purification</b>	Antigen affinity purification
<b>Isotype</b>	IgG
<b>Recommend Usage</b>	Immunohistochemistry (Formalin/PFA-fixed paraffin-embedded sections) (1:50-1:200) The optimal working dilution should be determined by the end user.
<b>Storage Buffer</b>	In PBS, pH 7.2 (40% glycerol, 0.02% sodium azide).

**Storage Instruction**

Store at 4°C. For long term storage store at -20°C.  
Aliquot to avoid repeated freezing and thawing.

**Note**

This product contains sodium azide: a POISONOUS AND HAZARDOUS SUBSTANCE which should be handled by trained staff only.

## Applications

- Immunohistochemistry (Formalin/PFA-fixed paraffin-embedded sections)

Immunohistochemical staining (Formalin-fixed paraffin-embedded sections) of human testis with CLDN11 polyclonal antibody (Cat # PAB30462) shows strong membranous positivity in cells in seminiferous ducts at 1:50-1:200 dilution.

## Gene Info — CLDN11

**Entrez GeneID** [5010](#)

**Protein Accession#** [O75508](#)

**Gene Name** CLDN11

**Gene Alias** OSP, OTM

**Gene Description** claudin 11

**Omim ID** [601326](#)

**Gene Ontology** [Hyperlink](#)

**Gene Summary** The protein encoded by this gene belongs to the claudin family of tight junction associated proteins and is a major component of central nervous system myelin that is necessary for normal CNS function. There is growing evidence that the protein determines the permeability between layers of myelin sheaths via focal adhesion and, with its expression highly regulated during development, may play an important role in cellular proliferation and migration. In addition, the protein is a candidate autoantigen in the development of autoimmune demyelinating disease. [provided by RefSeq]

**Other Designations** oligodendrocyte transmembrane protein

## Pathway

- [Cell adhesion molecules \(CAMs\)](#)
- [Leukocyte transendothelial migration](#)
- [Tight junction](#)