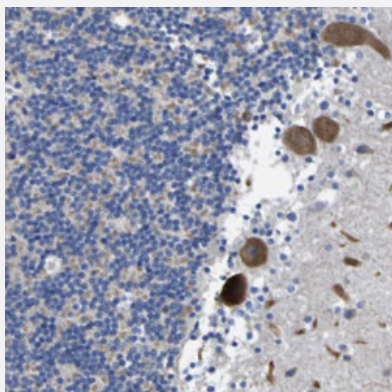


# SLITRK1 polyclonal antibody

Catalog # PAB30454      Size 100 uL

## Applications



### Immunohistochemistry (Formalin/PFA-fixed paraffin-embedded sections)

Immunohistochemical staining (Formalin-fixed paraffin-embedded sections) of human cerebellum with SLITRK1 polyclonal antibody (Cat # PAB30454) shows strong cytoplasmic positivity in Purkinje cells at 1:200-1:500 dilution.

## Specification

Product Description	Rabbit polyclonal antibody raised against partial recombinant human SLITRK1.
Immunogen	Recombinant protein corresponding to human SLITRK1.
Sequence	GNRLKTLPYEEVLEQIPGIAEILLEDNPWDCTCDLLSLKEWLENIPKNALIGRVVCEAPTRLQGKDL NETTEQDLCLPLKNRVDSSLPAPPAQEETFAPGPLPTPFKTNGQEDHATPGSAPNGGKIPGNWQ IKIRPTAAIATGSSRNKP
Host	Rabbit
Reactivity	Human
Form	Liquid
Purification	Antigen affinity purification
Isotype	IgG
Recommend Usage	Immunohistochemistry (Formalin/PFA-fixed paraffin-embedded sections) (1:200-1:500) The optimal working dilution should be determined by the end user.

Storage Buffer	In PBS, pH 7.2 (40% glycerol, 0.02% sodium azide).
Storage Instruction	Store at 4°C. For long term storage store at -20°C. Aliquot to avoid repeated freezing and thawing.
Note	This product contains sodium azide: a POISONOUS AND HAZARDOUS SUBSTANCE which should be handled by trained staff only.

## Applications

- Immunohistochemistry (Formalin/PFA-fixed paraffin-embedded sections)

Immunohistochemical staining (Formalin-fixed paraffin-embedded sections) of human cerebellum with SLITRK1 polyclonal antibody (Cat # PAB30454) shows strong cytoplasmic positivity in Purkinje cells at 1:200-1:500 dilution.

## Gene Info — SLITRK1

Entrez GeneID	<a href="#">114798</a>
Protein Accession#	<a href="#">Q96PX8</a>
Gene Name	SLITRK1
Gene Alias	FLJ54428, KIAA0918, KIAA1910, LRRC12, RP11-395N17.1
Gene Description	SLIT and NTRK-like family, member 1
Omim ID	<a href="#">137580 609678</a>
Gene Ontology	<a href="#">Hyperlink</a>
Gene Summary	Members of the SLITRK family, such as SLITRK1, are integral membrane proteins with 2 N-terminal leucine-rich repeat (LRR) domains similar to those of SLIT proteins (see SLIT1; MIM 603742). Most SLITRKs, but not SLITRK1, also have C-terminal regions that share homology with neurotrophin receptors (see NTRK1; MIM 191315). SLITRKs are expressed predominantly in neural tissues and have neurite-modulating activity (Aruga et al., 2003 [PubMed 14557068]).[supplied by OMIM]
Other Designations	OTTHUMP00000018546 leucine rich repeat containing 12 slit and trk like 1 protein slit and trk like gene 1

## Disease

- [Attention Deficit Disorder with Hyperactivity](#)

- [Celiac Disease](#)
- [Genetic Predisposition to Disease](#)
- [Inversion](#)
- [Parkinson disease](#)
- [Tourette Syndrome](#)