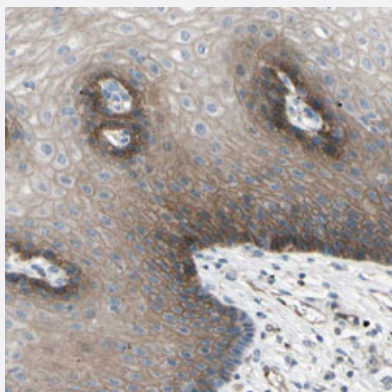


CDCP1 polyclonal antibody

Catalog # PAB30441

Size 100 uL

Applications



Immunohistochemistry (Formalin/PFA-fixed paraffin-embedded sections)

Immunohistochemical staining (Formalin-fixed paraffin-embedded sections) of human esophagus with CDCP1 polyclonal antibody (Cat # PAB30441) shows moderate membranous positivity at 1:50-1:200 dilution.

Specification

Product Description	Rabbit polyclonal antibody raised against partial recombinant human CDCP1.
Immunogen	Recombinant protein corresponding to human CDCP1.
Sequence	GFSIANRSSIKRLCIIESVFEGEGSATLMSANYPEGFPEDELMTWQFVVPAPHLRASVSFLNFNLSN CERKEERVEYYIPGSTTNPEVFKLEDKQPGNMAGNFNLSLQGCDQDAQSPGILRLQFQVLVQHP QNESNKIYVVDLSNERA
Host	Rabbit
Reactivity	Human
Form	Liquid
Purification	Antigen affinity purification
Isotype	IgG
Recommend Usage	Immunohistochemistry (Formalin/PFA-fixed paraffin-embedded sections) (1:50-1:200) The optimal working dilution should be determined by the end user.

Storage Buffer	In PBS, pH 7.2 (40% glycerol, 0.02% sodium azide).
Storage Instruction	Store at 4°C. For long term storage store at -20°C. Aliquot to avoid repeated freezing and thawing.
Note	This product contains sodium azide: a POISONOUS AND HAZARDOUS SUBSTANCE which should be handled by trained staff only.

Applications

- Immunohistochemistry (Formalin/PFA-fixed paraffin-embedded sections)

Immunohistochemical staining (Formalin-fixed paraffin-embedded sections) of human esophagus with CDCP1 polyclonal antibody (Cat # PAB30441) shows moderate membranous positivity at 1:50-1:200 dilution.

Gene Info — CDCP1

Entrez GeneID	64866
Protein Accession#	Q9H5V8
Gene Name	CDCP1
Gene Alias	CD318, SIMA135, TRASK
Gene Description	CUB domain containing protein 1
Gene Ontology	Hyperlink
Gene Summary	The protein encoded by this gene is a transmembrane protein containing three extracellular CUB domains. This protein is found to be overexpressed in colon and lung cancers. Its expression level is correlated with the metastatic ability of carcinoma cells. This protein is located on the cell surface. It has been shown to be tyrosine phosphorylated in a cancer cell line. Alternatively spliced transcript variants encoding distinct isoforms have been reported. [provided by RefSeq]
Other Designations	CUB domain-containing protein 1 OTTHUMP00000164120 transmembrane and associated with src kinases