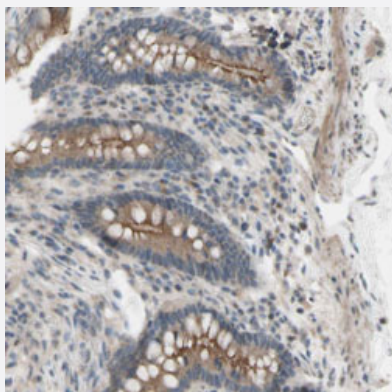


# CDCP1 polyclonal antibody

Catalog # PAB30440

Size 100 uL

## Applications



### Immunohistochemistry (Formalin/PFA-fixed paraffin-embedded sections)

Immunohistochemical staining (Formalin-fixed paraffin-embedded sections) of human colon with CDCP1 polyclonal antibody (Cat # PAB30440) shows moderate cytoplasmic positivity in glandular cells and extracellular material of glandular lumina at 1:20-1:50 dilution.

## Specification

Product Description	Rabbit polyclonal antibody raised against partial recombinant human CDCP1.
Immunogen	Recombinant protein corresponding to human CDCP1.
Sequence	SKHKISFLCDDLTRLWMNVEKTISCTDHRVCQRKSYSLQVPSDILHLPVELHDFSWKLLVPKDRLS LVLVPAQKLQQHTHEKPCNTSFSYLVASAIPSQDLYFGSFCPGGSIKQIQVKQ
Host	Rabbit
Reactivity	Human
Form	Liquid
Purification	Antigen affinity purification
Isotype	IgG
Recommend Usage	Immunohistochemistry (Formalin/PFA-fixed paraffin-embedded sections) (1:20-1:50) The optimal working dilution should be determined by the end user.
Storage Buffer	In PBS, pH 7.2 (40% glycerol, 0.02% sodium azide).

**Storage Instruction**

Store at 4°C. For long term storage store at -20°C.  
Aliquot to avoid repeated freezing and thawing.

**Note**

This product contains sodium azide: a POISONOUS AND HAZARDOUS SUBSTANCE which should be handled by trained staff only.

## Applications

- Immunohistochemistry (Formalin/PFA-fixed paraffin-embedded sections)

Immunohistochemical staining (Formalin-fixed paraffin-embedded sections) of human colon with CDCP1 polyclonal antibody (Cat # PAB30440) shows moderate cytoplasmic positivity in glandular cells and extracellular material of glandular lumina at 1:20-1:50 dilution.

## Gene Info — CDCP1

**Entrez GeneID**[64866](#)**Protein Accession#**[Q9H5V8](#)**Gene Name**

CDCP1

**Gene Alias**

CD318, SIMA135, TRASK

**Gene Description**

CUB domain containing protein 1

**Gene Ontology**[Hyperlink](#)**Gene Summary**

The protein encoded by this gene is a transmembrane protein containing three extracellular CUB domains. This protein is found to be overexpressed in colon and lung cancers. Its expression level is correlated with the metastatic ability of carcinoma cells. This protein is located on the cell surface. It has been shown to be tyrosine phosphorylated in a cancer cell line. Alternatively spliced transcript variants encoding distinct isoforms have been reported. [provided by RefSeq]

**Other Designations**

CUB domain-containing protein 1|OTTHUMP00000164120|transmembrane and associated with src kinases