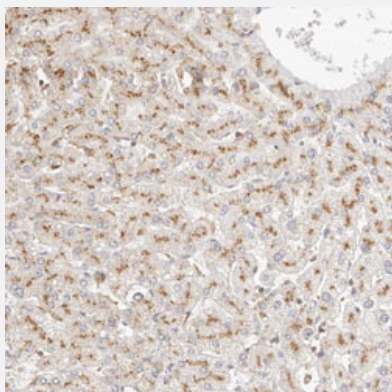


LECT1 polyclonal antibody

Catalog # PAB30432 Size 100 uL

Applications



Immunohistochemistry (Formalin/PFA-fixed paraffin-embedded sections)

Immunohistochemical staining (Formalin-fixed paraffin-embedded sections) of human liver with LECT1 polyclonal antibody (Cat # PAB30432) shows moderate granular cytoplasmic positivity in hepatocytes at 1:50-1:200 dilution.

Specification

Product Description	Rabbit polyclonal antibody raised against partial recombinant human LECT1.
Immunogen	Recombinant protein corresponding to human LECT1.
Sequence	NGITGIRFAGGEKCYKAQVKARIPVGVAVTKQSSISKLEGKIMPVKYEENSLIWVAVDQPVKDNSFLSSKVLELCGDLPIFWLKPTYPKEIQRERREVVRKIVPTTTKRPHSGPRSNPGAGRLNNETRPSVQ
Host	Rabbit
Reactivity	Human
Form	Liquid
Purification	Antigen affinity purification
Isotype	IgG
Recommend Usage	Immunohistochemistry (Formalin/PFA-fixed paraffin-embedded sections) (1:50-1:200) The optimal working dilution should be determined by the end user.
Storage Buffer	In PBS, pH 7.2 (40% glycerol, 0.02% sodium azide).

Storage Instruction

Store at 4°C. For long term storage store at -20°C.
Aliquot to avoid repeated freezing and thawing.

Note

This product contains sodium azide: a POISONOUS AND HAZARDOUS SUBSTANCE which should be handled by trained staff only.

Applications

- Immunohistochemistry (Formalin/PFA-fixed paraffin-embedded sections)

Immunohistochemical staining (Formalin-fixed paraffin-embedded sections) of human liver with LECT1 polyclonal antibody (Cat # PAB30432) shows moderate granular cytoplasmic positivity in hepatocytes at 1:50-1:200 dilution.

Gene Info — LECT1

Entrez GeneID

[11061](#)

Protein Accession#

[O75829](#)

Gene Name

LECT1

Gene Alias

BRICD3, CHM-I, CHM1

Gene Description

leukocyte cell derived chemotaxin 1

Omim ID

[605147](#)

Gene Ontology

[Hyperlink](#)

Gene Summary

This gene encodes a glycosylated transmembrane protein that is cleaved to form a mature, secreted protein. The N-terminus of the precursor protein shares characteristics with other surfactant proteins and is sometimes called chondrosurfactant protein although no biological activity has yet been defined for it. The C-terminus of the precursor protein contains a 25 kDa mature protein called leukocyte cell-derived chemotaxin-1 or chondromodulin-1. The mature protein promotes chondrocyte growth and inhibits angiogenesis. This gene is expressed in the avascular zone of prehypertrophic cartilage and its expression decreases during chondrocyte hypertrophy and vascular invasion. The mature protein likely plays a role in endochondral bone development by permitting cartilaginous anlagen to be vascularized and replaced by bone. It may be involved also in the broad control of tissue vascularization during development. Alternative splicing results in multiple transcript variants encoding different isoforms. [provided by RefSeq]

Other Designations

BRICHOS domain containing 3|OTTHUMP00000018466|chondromodulin I

Disease

- [Arthritis](#)
- [Disease Progression](#)
- [Osteoarthritis](#)