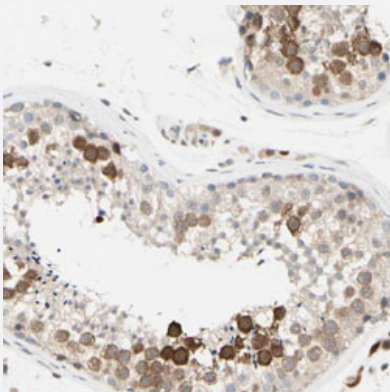


# PTTG1 polyclonal antibody

Catalog # PAB30425      Size 100 uL

## Applications



### Immunohistochemistry (Formalin/PFA-fixed paraffin-embedded sections)

Immunohistochemical staining (Formalin-fixed paraffin-embedded sections) of human testis with PTTG1 polyclonal antibody (Cat # PAB30425) shows strong cytoplasmic positivity in cells in seminiferous ducts at 1:50-1:200 dilution.

## Specification

Product Description	Rabbit polyclonal antibody raised against partial recombinant human PTTG1.
Immunogen	Recombinant protein corresponding to human PTTG1.
Sequence	PPALPKATRKALGTVNRATEKSVKTKGPLKQKQPSFSAKKMTEKTVKAKSSVPASDDAYPEIEK FFPFNPLDFESFDLPEEHQIAHLPLSGVPLMILDEERELEKLFQLGPPSPVKMPSPPWESNLLQS PSS
Host	Rabbit
Reactivity	Human
Form	Liquid
Purification	Antigen affinity purification
Isotype	IgG
Recommend Usage	Immunohistochemistry (Formalin/PFA-fixed paraffin-embedded sections) (1:50-1:200) The optimal working dilution should be determined by the end user.

Storage Buffer	In PBS, pH 7.2 (40% glycerol, 0.02% sodium azide).
Storage Instruction	Store at 4°C. For long term storage store at -20°C. Aliquot to avoid repeated freezing and thawing.
Note	This product contains sodium azide: a POISONOUS AND HAZARDOUS SUBSTANCE which should be handled by trained staff only.

## Applications

- Immunohistochemistry (Formalin/PFA-fixed paraffin-embedded sections)

Immunohistochemical staining (Formalin-fixed paraffin-embedded sections) of human testis with PTTG1 polyclonal antibody (Cat # PAB30425) shows strong cytoplasmic positivity in cells in seminiferous ducts at 1:50-1:200 dilution.

## Gene Info — PTTG1

Entrez GeneID	<a href="#">9232</a>
Protein Accession#	<a href="#">O95997</a>
Gene Name	PTTG1
Gene Alias	EAP1, HPTTG, MGC126883, MGC138276, PTTG, TUTR1
Gene Description	pituitary tumor-transforming 1
Omim ID	<a href="#">604147</a>
Gene Ontology	<a href="#">Hyperlink</a>

Gene Summary	The encoded protein is a homolog of yeast securin proteins, which prevent separins from promoting sister chromatid separation. It is an anaphase-promoting complex (APC) substrate that associates with a separin until activation of the APC. The gene product has transforming activity in vitro and tumorigenic activity in vivo, and the gene is highly expressed in various tumors. The gene product contains 2 PXXP motifs, which are required for its transforming and tumorigenic activities, as well as for its stimulation of basic fibroblast growth factor expression. It also contains a destruction box (D box) that is required for its degradation by the APC. The acidic C-terminal region of the encoded protein can act as a transactivation domain. The gene product is mainly a cytosolic protein, although it partially localizes in the nucleus. [provided by RefSeq]
--------------	--

Other Designations	ESP1-associated protein 1 OTTHUMP00000160845 pituitary tumor-transforming protein 1 securin tumor-transforming protein 1
--------------------	--

## Pathway

- [Cell cycle](#)

## Disease

- [Breast cancer](#)
- [Breast Neoplasms](#)
- [Carcinoma](#)
- [Chromosomal Instability](#)
- [Genetic Predisposition to Disease](#)
- [Narcolepsy](#)
- [Ovarian Neoplasms](#)
- [Psoriasis](#)