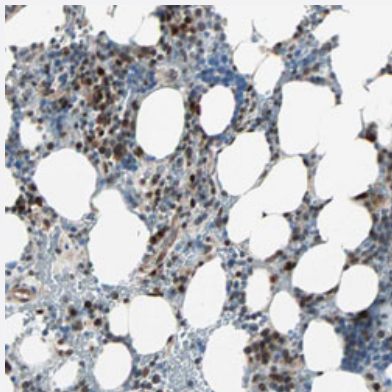


CBX4 polyclonal antibody

Catalog # PAB30421 Size 100 uL

Applications



Immunohistochemistry (Formalin/PFA-fixed paraffin-embedded sections)

Immunohistochemical staining (Formalin-fixed paraffin-embedded sections) of human bone marrow with CBX4 polyclonal antibody (Cat # PAB30421) shows strong nuclear positivity in subset of hematopoietic cells at 1:50-1:200 dilution.

Specification

Product Description	Rabbit polyclonal antibody raised against partial recombinant human CBX4.
Immunogen	Recombinant protein corresponding to human CBX4.
Sequence	QPEVILLDSLDEPIDLRCVKTRSEAGEPPSSLQVKPETPASAAVAVAAAAAPTITTAEKPPAEAQ DEPAESLSEFKPFFGNIIITDVTANCLTVTFKEYVTV
Host	Rabbit
Reactivity	Human
Form	Liquid
Purification	Antigen affinity purification
Isotype	IgG
Recommend Usage	Immunohistochemistry (Formalin/PFA-fixed paraffin-embedded sections) (1:50-1:200) The optimal working dilution should be determined by the end user.
Storage Buffer	In PBS, pH 7.2 (40% glycerol, 0.02% sodium azide).

Storage Instruction

Store at 4°C. For long term storage store at -20°C.
Aliquot to avoid repeated freezing and thawing.

Note

This product contains sodium azide: a POISONOUS AND HAZARDOUS SUBSTANCE which should be handled by trained staff only.

Applications

- Immunohistochemistry (Formalin/PFA-fixed paraffin-embedded sections)

Immunohistochemical staining (Formalin-fixed paraffin-embedded sections) of human bone marrow with CBX4 polyclonal antibody (Cat # PAB30421) shows strong nuclear positivity in subset of hematopoietic cells at 1:50-1:200 dilution.

Gene Info — CBX4

Entrez GeneID[8535](#)**Protein Accession#**[O00257](#)**Gene Name**

CBX4

Gene Alias

NBP16, PC2, hPC2

Gene Description

chromobox homolog 4 (Pc class homolog, Drosophila)

Omim ID[603079](#)**Gene Ontology**[Hyperlink](#)**Gene Summary**

O

Other Designations

NS5ATP1-binding protein 16|chromobox homolog 4