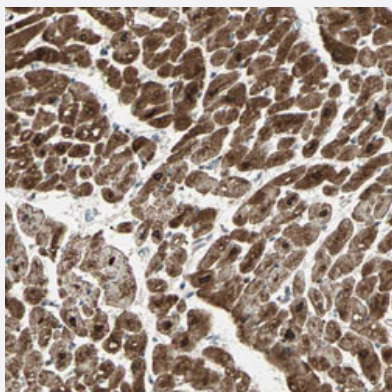


# GPR61 polyclonal antibody

Catalog # PAB30408

Size 100 uL

## Applications



### Immunohistochemistry (Formalin/PFA-fixed paraffin-embedded sections)

Immunohistochemical staining (Formalin-fixed paraffin-embedded sections) of human cardiac muscle with GPR61 polyclonal antibody (Cat # PAB30408) shows strong cytoplasmic positivity in myocytes at 1:20-1:50 dilution.

## Specification

Product Description	Rabbit polyclonal antibody raised against partial recombinant human GPR61.
Immunogen	Recombinant protein corresponding to human GPR61.
Sequence	SMFRVARVAAMQHGLPTWMETPRQRSESLSSRSTMTSSGAPQTTPHRTFGGGKAAVV
Host	Rabbit
Reactivity	Human
Form	Liquid
Purification	Antigen affinity purification
Isotype	IgG
Recommend Usage	Immunohistochemistry (Formalin/PFA-fixed paraffin-embedded sections) (1:20-1:50) The optimal working dilution should be determined by the end user.
Storage Buffer	In PBS, pH 7.2 (40% glycerol, 0.02% sodium azide).

**Storage Instruction**

Store at 4°C. For long term storage store at -20°C.  
Aliquot to avoid repeated freezing and thawing.

**Note**

This product contains sodium azide: a POISONOUS AND HAZARDOUS SUBSTANCE which should be handled by trained staff only.

## Applications

- Immunohistochemistry (Formalin/PFA-fixed paraffin-embedded sections)

Immunohistochemical staining (Formalin-fixed paraffin-embedded sections) of human cardiac muscle with GPR61 polyclonal antibody (Cat # PAB30408) shows strong cytoplasmic positivity in myocytes at 1:20-1:50 dilution.

## Gene Info — GPR61

**Entrez GeneID** [83873](#)

**Protein Accession#** [Q9BZJ8](#)

**Gene Name** GPR61

**Gene Alias** BALGR, GPCR3

**Gene Description** G protein-coupled receptor 61

**Omim ID** [606916](#)

**Gene Ontology** [Hyperlink](#)

**Gene Summary** This gene belongs to the G-protein coupled receptor 1 family. G protein-coupled receptors contain 7 transmembrane domains and transduce extracellular signals through heterotrimeric G proteins. The protein encoded by this gene is most closely related to biogenic amine receptors. [provided by RefSeq]

**Other Designations** OTTHUMP00000013345|biogenic amine receptor-like GPCR