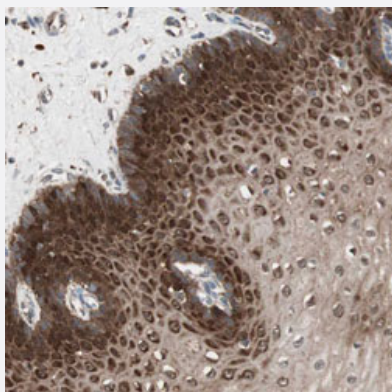


STAB1 polyclonal antibody

Catalog # PAB30389

Size 100 uL

Applications



Immunohistochemistry (Formalin/PFA-fixed paraffin-embedded sections)

Immunohistochemical staining (Formalin-fixed paraffin-embedded sections) of human esophagus with STAB1 polyclonal antibody (Cat # PAB30389) shows strong cytoplasmic positivity in squamous epithelial cells at 1:200-1:500 dilution.

Specification

Product Description	Rabbit polyclonal antibody raised against partial recombinant human STAB1.
Immunogen	Recombinant protein corresponding to human STAB1.
Sequence	LEYKELKGDGPFTIFVPHADLMSNLSQDELARIRAHRLVFRYHVVGCRRRLRSEDLLEQGYATALS GHPLRFSEREGSYLNDFARVVSSDHEAVNGILH
Host	Rabbit
Reactivity	Human
Form	Liquid
Purification	Antigen affinity purification
Isotype	IgG
Recommend Usage	Immunohistochemistry (Formalin/PFA-fixed paraffin-embedded sections) (1:200-1:500) The optimal working dilution should be determined by the end user.
Storage Buffer	In PBS, pH 7.2 (40% glycerol, 0.02% sodium azide).

Storage Instruction

Store at 4°C. For long term storage store at -20°C.
Aliquot to avoid repeated freezing and thawing.

Note

This product contains sodium azide: a POISONOUS AND HAZARDOUS SUBSTANCE which should be handled by trained staff only.

Applications

- Immunohistochemistry (Formalin/PFA-fixed paraffin-embedded sections)

Immunohistochemical staining (Formalin-fixed paraffin-embedded sections) of human esophagus with STAB1 polyclonal antibody (Cat # PAB30389) shows strong cytoplasmic positivity in squamous epithelial cells at 1:200-1:500 dilution.

Gene Info — STAB1

Entrez GeneID [23166](#)

Protein Accession# [Q9NY15](#)

Gene Name STAB1

Gene Alias CLEVER-1, FEEL-1, FELE-1, FEX1, KIAA0246, STAB-1

Gene Description stabilin 1

Omim ID [608560](#)

Gene Ontology [Hyperlink](#)

Gene Summary

This gene encodes a large, transmembrane receptor protein which may function in angiogenesis, lymphocyte homing, cell adhesion, or receptor scavenging. The protein contains 7 fasciclin, 16 epidermal growth factor (EGF)-like, and 2 laminin-type EGF-like domains as well as a C-type lectin-like hyaluronan-binding Link module. The protein is primarily expressed on sinusoidal endothelial cells of liver, spleen, and lymph node. The receptor has been shown to endocytose ligands such as a low density lipoprotein, Gram-positive and Gram-negative bacteria, and advanced glycosylation end products. Supporting its possible role as a scavenger receptor, the protein rapidly cycles between the plasma membrane and early endosomes. [provided by RefSeq]

Other Designations

MS-1 antigen|common lymphatic endothelial and vascular endothelial receptor-1|fasciclin egf-like, laminin-type egf-like, and link domain-containing scavenger receptor-1

Disease

- [Genetic Predisposition to Disease](#)

- [Schizophrenia](#)