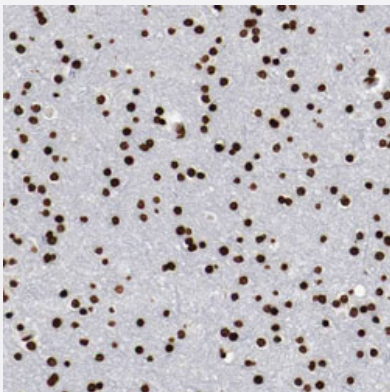


BARHL1 polyclonal antibody

Catalog # PAB30380 Size 100 uL

Applications



Immunohistochemistry (Formalin/PFA-fixed paraffin-embedded sections)

Immunohistochemical staining (Formalin-fixed paraffin-embedded sections) of human cerebral cortex with BARHL1 polyclonal antibody (Cat # PAB30380) shows strong nuclear positivity in neuronal cells and glial cells at 1:200-1:500 dilution.

Specification

Product Description	Rabbit polyclonal antibody raised against partial recombinant human BARHL1.
Immunogen	Recombinant protein corresponding to human BARHL1.
Sequence	LELSPRSESSSDCSSPASPGRDCLETGTPRPGGASGPGLDSHLQPGQLSAPAQSRVTSSFLIR DILADCKPLAACAPYSSSGQPAAPEPGGRLAAKAAEDFRDKLDKSGSNASSDSEYKVKEEGDR EISSRDSP
Host	Rabbit
Reactivity	Human
Form	Liquid
Purification	Antigen affinity purification
Isotype	IgG
Recommend Usage	Immunohistochemistry (Formalin/PFA-fixed paraffin-embedded sections) (1:200-1:500) The optimal working dilution should be determined by the end user.

Storage Buffer	In PBS, pH 7.2 (40% glycerol, 0.02% sodium azide).
Storage Instruction	Store at 4°C. For long term storage store at -20°C. Aliquot to avoid repeated freezing and thawing.
Note	This product contains sodium azide: a POISONOUS AND HAZARDOUS SUBSTANCE which should be handled by trained staff only.

Applications

- Immunohistochemistry (Formalin/PFA-fixed paraffin-embedded sections)

Immunohistochemical staining (Formalin-fixed paraffin-embedded sections) of human cerebral cortex with BARHL1 polyclonal antibody (Cat # PAB30380) shows strong nuclear positivity in neuronal cells and glial cells at 1:200-1:500 dilution.

Gene Info — BARHL1

Entrez GeneID	56751
Protein Accession#	Q9BZE3
Gene Name	BARHL1
Gene Alias	-
Gene Description	BarH-like homeobox 1
Omim ID	605211
Gene Ontology	Hyperlink
Other Designations	BarH-like 1 OTTHUMP00000022433