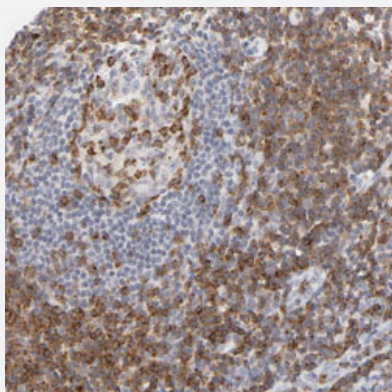


# CD2 polyclonal antibody

Catalog # PAB30359      Size 100 uL

## Applications



### Immunohistochemistry (Formalin/PFA-fixed paraffin-embedded sections)

Immunohistochemical staining (Formalin-fixed paraffin-embedded sections) of human tonsil with CD2 polyclonal antibody (Cat # PAB30359) shows moderate cytoplasmic positivity in reaction center cells and lymphoid cells outside reaction centra at 1:500-1:1000 dilution.

## Specification

|                     |   |
|---------------------|---|
| Product Description | Rabbit polyclonal antibody raised against partial recombinant human CD2.  |
| Immunogen           | Recombinant protein corresponding to human CD2.   |
| Sequence            | DEELETRAHRVATEERGRKPHQIPASTPQNPATSQHPPPPPGHRSQAPSHRPPPPGHRVQHQP<br>QKRPPAPSGTQVHQKGPPLPRPRVQPKPPHGAAENSLSP  |
| Host                | Rabbit  |
| Reactivity          | Human   |
| Form                | Liquid  |
| Purification        | Antigen affinity purification   |
| Isotype             | IgG   |
| Recommend Usage     | Immunohistochemistry (Formalin/PFA-fixed paraffin-embedded sections) (1:500-1:1000)<br>The optimal working dilution should be determined by the end user. |
| Storage Buffer      | In PBS, pH 7.2 (40% glycerol, 0.02% sodium azide).  |

**Storage Instruction**

Store at 4°C. For long term storage store at -20°C.  
Aliquot to avoid repeated freezing and thawing.

**Note**

This product contains sodium azide: a POISONOUS AND HAZARDOUS SUBSTANCE which should be handled by trained staff only.

## Applications

- Immunohistochemistry (Formalin/PFA-fixed paraffin-embedded sections)

Immunohistochemical staining (Formalin-fixed paraffin-embedded sections) of human tonsil with CD2 polyclonal antibody (Cat # PAB30359) shows moderate cytoplasmic positivity in reaction center cells and lymphoid cells outside reaction centra at 1:500-1:1000 dilution.

## Gene Info — CD2

**Entrez GeneID**[914](#)**Protein Accession#**[P06729](#)**Gene Name**

CD2

**Gene Alias**

SRBC, T11

**Gene Description**

CD2 molecule

**Omim ID**[186990](#)**Gene Ontology**[Hyperlink](#)**Gene Summary**

sheep red blood cell receptor|OTTHUMP00000024366|OTTHUMP00000059318|lymphocyte-function antigen-2

**Other Designations**

CD2 antigen (p50), sheep red blood cell receptor|OTTHUMP00000024366|OTTHUMP00000059318|lymphocyte-function antigen-2

## Pathway

- [Cell adhesion molecules \(CAMs\)](#)
- [Hematopoietic cell lineage](#)

## Disease

- [Arthritis](#)
- [Genetic Predisposition to Disease](#)