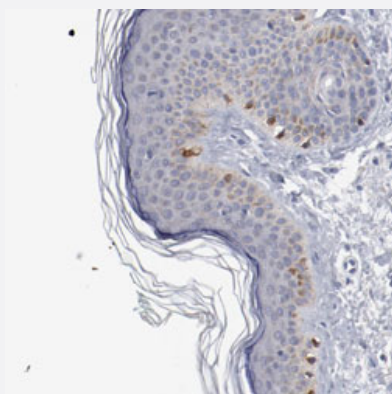


GPR143 polyclonal antibody

Catalog # PAB30351 Size 100 uL

Applications



Immunohistochemistry (Formalin/PFA-fixed paraffin-embedded sections)

Immunohistochemical staining (Formalin-fixed paraffin-embedded sections) of human skin with GPR143 polyclonal antibody (Cat # PAB30351) shows moderate cytoplasmic positivity in melanocytes at 1:200-1:500 dilution.

Specification

Product Description	Rabbit polyclonal antibody raised against partial recombinant human GPR143.
Immunogen	Recombinant protein corresponding to human GPR143.
Sequence	CSLGFQSPRKEIQWESLTTSAAEGAHPSPLMPHENPASGKVSQVGGQTSDEALSMLSEGSDASTIEHTASESCNKNEGDPALPT
Host	Rabbit
Reactivity	Human
Form	Liquid
Purification	Antigen affinity purification
Isotype	IgG
Recommend Usage	Immunohistochemistry (Formalin/PFA-fixed paraffin-embedded sections) (1:200-1:500) The optimal working dilution should be determined by the end user.
Storage Buffer	In PBS, pH 7.2 (40% glycerol, 0.02% sodium azide).

Storage Instruction

Store at 4°C. For long term storage store at -20°C.
Aliquot to avoid repeated freezing and thawing.

Note

This product contains sodium azide: a POISONOUS AND HAZARDOUS SUBSTANCE which should be handled by trained staff only.

Applications

- Immunohistochemistry (Formalin/PFA-fixed paraffin-embedded sections)

Immunohistochemical staining (Formalin-fixed paraffin-embedded sections) of human skin with GPR143 polyclonal antibody (Cat # PAB30351) shows moderate cytoplasmic positivity in melanocytes at 1:200-1:500 dilution.

Gene Info — GPR143

Entrez GeneID[4935](#)**Protein Accession#**[P51810](#)**Gene Name**

GPR143

Gene Alias

OA1

Gene Description

G protein-coupled receptor 143

Omim ID[300500](#)**Gene Ontology**[Hyperlink](#)**Gene Summary**

Ocular albinism type 1 protein is a conserved integral membrane protein with seven transmembrane domains. It is expressed in the eye and epidermal melanocytes. [provided by RefSeq]

Other Designations

OTTHUMP00000022884|ocular albinism 1 (Nettleship-Falls)|ocular albinism-1, Nettleship-Falls type