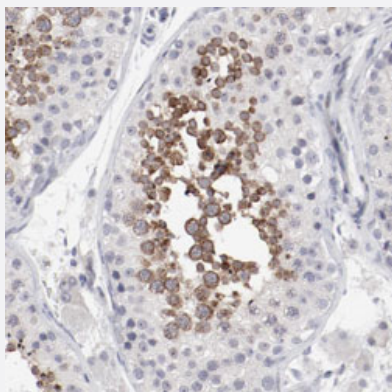


FSCB polyclonal antibody

Catalog # PAB30345 Size 100 uL

Applications



Immunohistochemistry (Formalin/PFA-fixed paraffin-embedded sections)

Immunohistochemical staining (Formalin-fixed paraffin-embedded sections) of human testis with FSCB polyclonal antibody (Cat # PAB30345) shows strong cytoplasmic positivity in cells in seminiferous ducts at 1:200-1:500 dilution.

Specification

Product Description	Rabbit polyclonal antibody raised against partial recombinant human FSCB.
Immunogen	Recombinant protein corresponding to human FSCB.
Sequence	ADLLLTEEFPIGEASAEVSPPPSEQTPEDALVENVSTEFQSPQVAGIPAVKLGSVVLEGEAKFE EVSKINSVLKDLSENTNDGQAPT
Host	Rabbit
Reactivity	Human
Form	Liquid
Purification	Antigen affinity purification
Isotype	IgG
Recommend Usage	Immunohistochemistry (Formalin/PFA-fixed paraffin-embedded sections) (1:200-1:500) The optimal working dilution should be determined by the end user.
Storage Buffer	In PBS, pH 7.2 (40% glycerol, 0.02% sodium azide).

Storage Instruction

Store at 4°C. For long term storage store at -20°C.
Aliquot to avoid repeated freezing and thawing.

Note

This product contains sodium azide: a POISONOUS AND HAZARDOUS SUBSTANCE which should be handled by trained staff only.

Applications

- Immunohistochemistry (Formalin/PFA-fixed paraffin-embedded sections)

Immunohistochemical staining (Formalin-fixed paraffin-embedded sections) of human testis with FSCB polyclonal antibody (Cat # PAB30345) shows strong cytoplasmic positivity in cells in seminiferous ducts at 1:200-1:500 dilution.

Gene Info — FSCB

Entrez GeneID[84075](#)**Protein Accession#**[Q5H9T9](#)**Gene Name**

FSCB

Gene Alias

C14orf155, DKFZp434F1017, DKFZp686A1639, DKFZp686J0539

Gene Description

fibrous sheath CABYR binding protein

Gene Ontology[Hyperlink](#)**Other Designations**

OTTHUMP00000178911