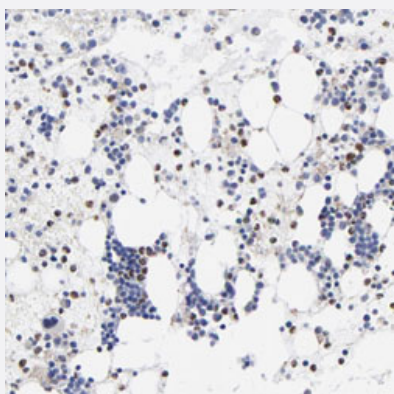


T polyclonal antibody

Catalog # PAB30336 Size 100 uL

Applications



Immunohistochemistry (Formalin/PFA-fixed paraffin-embedded sections)

Immunohistochemical staining (Formalin-fixed paraffin-embedded sections) of human bone marrow with T polyclonal antibody (Cat # PAB30336) shows moderate nuclear positivity in a subset of bone marrow poietic cells at 1:20-1:50 dilution.

Specification

Product Description	Rabbit polyclonal antibody raised against partial recombinant human T.
Immunogen	Recombinant protein corresponding to human T.
Sequence	QQPGYSQWGWLPGTSTLCPPANPHPQFGGALSLPSTHSCDRYPTLRSHRSSPYSPYAHRNN SPTYSDNSPACLSMLQSHDNWSSLGMPAHPSMLPVSHNASPTSSSQY
Host	Rabbit
Reactivity	Human
Form	Liquid
Purification	Antigen affinity purification
Isotype	IgG
Recommend Usage	Immunohistochemistry (Formalin/PFA-fixed paraffin-embedded sections) (1:20-1:50) The optimal working dilution should be determined by the end user.
Storage Buffer	In PBS, pH 7.2 (40% glycerol, 0.02% sodium azide).

Storage Instruction

Store at 4°C. For long term storage store at -20°C.
Aliquot to avoid repeated freezing and thawing.

Note

This product contains sodium azide: a POISONOUS AND HAZARDOUS SUBSTANCE which should be handled by trained staff only.

Applications

- Immunohistochemistry (Formalin/PFA-fixed paraffin-embedded sections)

Immunohistochemical staining (Formalin-fixed paraffin-embedded sections) of human bone marrow with T polyclonal antibody (Cat # PAB30336) shows moderate nuclear positivity in a subset of bone marrow poietic cells at 1:20-1:50 dilution.

Gene Info — T

Entrez GeneID[6862](#)**Protein Accession#**[O15178](#)**Gene Name**

T

Gene Alias

MGC104817, TFT

Gene Description

T, brachyury homolog (mouse)

Omim ID[182940 601397](#)**Gene Ontology**[Hyperlink](#)**Gene Summary**

The protein encoded by this gene is an embryonic nuclear transcription factor that binds to a specific DNA element, the palindromic T-site. It binds through a region in its N-terminus, called the T-box, and effects transcription of genes required for mesoderm formation and differentiation. The protein is localized to notochord-derived cells. [provided by RefSeq]

Other Designations

OTTHUMP00000017588|T brachyury homolog|T brachyury-like|transcription factor T

Disease

- [Cognition](#)