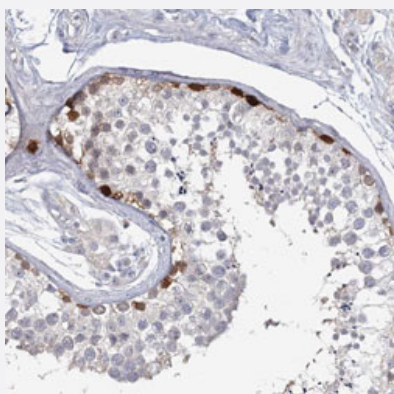


USP11 polyclonal antibody

Catalog # PAB30334

Size 100 uL

Applications



Immunohistochemistry (Formalin/PFA-fixed paraffin-embedded sections)

Immunohistochemical staining (Formalin-fixed paraffin-embedded sections) of human testis with USP11 polyclonal antibody (Cat # PAB30334) shows distinct nuclear and cytoplasmic positivity of basal cells in seminiferous ducts at 1:50-1:200 dilution.

Specification

Product Description	Rabbit polyclonal antibody raised against partial recombinant human USP11.
Immunogen	Recombinant protein corresponding to human USP11.
Sequence	ESGRERPLRAGESWFLVEKHWYQWEAYVQGGDQDSSTFPGCINNATLFQDEINWRLKEGLVE GEDYVLLPAAAWHYLVSWYGLEHGQPPIERKVIELPNIQKVEVYPVELLLVRHNDLGKSHTVQFS
Host	Rabbit
Reactivity	Human
Form	Liquid
Purification	Antigen affinity purification
Isotype	IgG
Recommend Usage	Immunohistochemistry (Formalin/PFA-fixed paraffin-embedded sections) (1:50-1:200) The optimal working dilution should be determined by the end user.
Storage Buffer	In PBS, pH 7.2 (40% glycerol, 0.02% sodium azide).

Storage Instruction

Store at 4°C. For long term storage store at -20°C.
Aliquot to avoid repeated freezing and thawing.

Note

This product contains sodium azide: a POISONOUS AND HAZARDOUS SUBSTANCE which should be handled by trained staff only.

Applications

- Immunohistochemistry (Formalin/PFA-fixed paraffin-embedded sections)

Immunohistochemical staining (Formalin-fixed paraffin-embedded sections) of human testis with USP11 polyclonal antibody (Cat # PAB30334) shows distinct nuclear and cytoplasmic positivity of basal cells in seminiferous ducts at 1:50-1:200 dilution.

Gene Info — USP11

Entrez GeneID[8237](#)**Protein Accession#**[P51784](#)**Gene Name**

USP11

Gene Alias

UHX1

Gene Description

ubiquitin specific peptidase 11

Omim ID[300050](#)**Gene Ontology**[Hyperlink](#)**Gene Summary**

Protein ubiquitination controls many intracellular processes, including cell cycle progression, transcriptional activation, and signal transduction. This dynamic process, involving ubiquitin conjugating enzymes and deubiquitinating enzymes, adds and removes ubiquitin. Deubiquitinating enzymes are cysteine proteases that specifically cleave ubiquitin from ubiquitin-conjugated protein substrates. This gene encodes a deubiquitinating enzyme which lies in a gene cluster on chromosome Xp11.23 [provided by RefSeq]

Other Designations

deubiquitinating enzyme 11|ubiquitin carboxyl-terminal hydrolase, X-linked|ubiquitin specific protease 11|ubiquitin thiolesterase 11|ubiquitin-specific processing protease 11