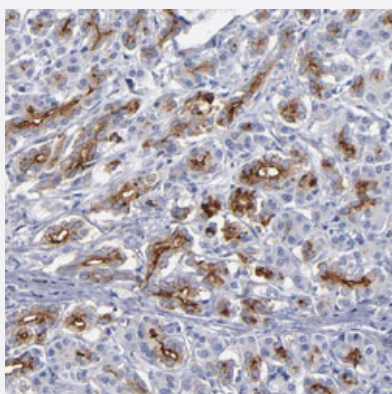


TM4SF1 polyclonal antibody

Catalog # PAB30331 Size 100 uL

Applications



Immunohistochemistry (Formalin/PFA-fixed paraffin-embedded sections)

Immunohistochemical staining (Formalin-fixed paraffin-embedded sections) of human pancreas with TM4SF1 polyclonal antibody (Cat # PAB30331) shows moderate cytoplasmic and membranous positivity in exocrine glandular cells at 1:500-1:1000 dilution.

Specification

Product Description	Rabbit polyclonal antibody raised against partial recombinant human TM4SF1.
Immunogen	Recombinant protein corresponding to human TM4SF1.
Sequence	GPLCLDSLQWNYTFASLEGQYLLDTSTWSECTEPKHIVEWNVSLFSI
Host	Rabbit
Reactivity	Human
Form	Liquid
Purification	Antigen affinity purification
Isotype	IgG
Recommend Usage	Immunohistochemistry (Formalin/PFA-fixed paraffin-embedded sections) (1:500-1:1000) The optimal working dilution should be determined by the end user.
Storage Buffer	In PBS, pH 7.2 (40% glycerol, 0.02% sodium azide).

Storage Instruction

Store at 4°C. For long term storage store at -20°C.
Aliquot to avoid repeated freezing and thawing.

Note

This product contains sodium azide: a POISONOUS AND HAZARDOUS SUBSTANCE which should be handled by trained staff only.

Applications

- Immunohistochemistry (Formalin/PFA-fixed paraffin-embedded sections)

Immunohistochemical staining (Formalin-fixed paraffin-embedded sections) of human pancreas with TM4SF1 polyclonal antibody (Cat # PAB30331) shows moderate cytoplasmic and membranous positivity in exocrine glandular cells at 1:500-1:1000 dilution.

Gene Info — TM4SF1

Entrez GeneID[4071](#)**Protein Accession#**[P30408](#)**Gene Name**

TM4SF1

Gene Alias

H-L6, L6, M3S1, TAAL6

Gene Description

transmembrane 4 L six family member 1

Omim ID[191155](#)**Gene Ontology**[Hyperlink](#)**Gene Summary**

The protein encoded by this gene is a member of the transmembrane 4 superfamily, also known as the tetraspanin family. Most of these members are cell-surface proteins that are characterized by the presence of four hydrophobic domains. The proteins mediate signal transduction events that play a role in the regulation of cell development, activation, growth and motility. This encoded protein is a cell surface antigen and is highly expressed in different carcinomas. [provided by RefSeq]

Other Designations

membrane component, chromosome 3, surface marker 1|transmembrane 4 superfamily member 1|tumor-associated antigen L6