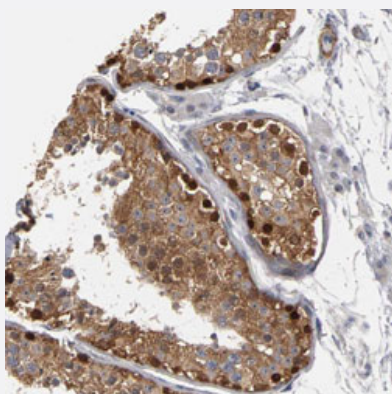


MAGEB1 polyclonal antibody

Catalog # PAB30330

Size 100 uL

Applications



Immunohistochemistry (Formalin/PFA-fixed paraffin-embedded sections)

Immunohistochemical staining (Formalin-fixed paraffin-embedded sections) of human testis with MAGEB1 polyclonal antibody (Cat # PAB30330) shows strong cytoplasmic and nuclear positivity in cells of seminiferous ducts at 1:50-1:200 dilution.

Specification

Product Description	Rabbit polyclonal antibody raised against partial recombinant human MAGEB1.
Immunogen	Recombinant protein corresponding to human MAGEB1.
Sequence	LKVAHATAAEKEECPSSSPVLGDTPTSSPAAGIPQKPQGAPPTTTAAAVSCTESDEGAKCQGE ENASFSQATTSTESSVKDPVAWEAGMLMHFILRKYKMREPIMKADMLKVVDKEYKDHFTTEILNGA SR
Host	Rabbit
Reactivity	Human
Form	Liquid
Purification	Antigen affinity purification
Isotype	IgG
Recommend Usage	Immunohistochemistry (Formalin/PFA-fixed paraffin-embedded sections) (1:50-1:200) The optimal working dilution should be determined by the end user.

Storage Buffer	In PBS, pH 7.2 (40% glycerol, 0.02% sodium azide).
Storage Instruction	Store at 4°C. For long term storage store at -20°C. Aliquot to avoid repeated freezing and thawing.
Note	This product contains sodium azide: a POISONOUS AND HAZARDOUS SUBSTANCE which should be handled by trained staff only.

Applications

- Immunohistochemistry (Formalin/PFA-fixed paraffin-embedded sections)

Immunohistochemical staining (Formalin-fixed paraffin-embedded sections) of human testis with MAGEB1 polyclonal antibody (Cat # PAB30330) shows strong cytoplasmic and nuclear positivity in cells of seminiferous ducts at 1:50-1:200 dilution.

Gene Info — MAGEB1

Entrez GeneID	4112
Protein Accession#	P43366
Gene Name	MAGEB1
Gene Alias	DAM10, MAGE-Xp, MAGEL1, MGC9322
Gene Description	melanoma antigen family B, 1
Omim ID	300097
Gene Ontology	Hyperlink

Gene Summary	<p>This gene is a member of the MAGEB gene family. The members of this family have their entire coding sequences located in the last exon, and the encoded proteins show 50 to 68% sequence identity to each other. The promoters and first exons of the MAGEB genes show considerable variability, suggesting that the existence of this gene family enables the same function to be expressed under different transcriptional controls. This gene is localized in the DSS (dosage-sensitive sex reversal) critical region, and expressed in testis and in a significant fraction of tumors of various histological types. This gene and other MAGEB members are clustered on chromosome Xp22-p21. Multiple alternatively spliced transcript variants encoding the same protein have been found for this gene, however, the full length nature of some variants has not been defined. [provided by RefSeq]</p>
--------------	-----------------------------------------------------------------------------------------------------------------------------------------------------------------------------------------------------------------------------------------------------------------------------------------------------------------------------------------------------------------------------------------------------------------------------------------------------------------------------------------------------------------------------------------------------------------------------------------------------------------------------------------------------------------------------------------------------------------------------------------------------------------------------------------------------------------------------------------------------------------------------------------------------------------

Other Designations	DSS/AHC critical interval MAGE superfamily 10 OTTHUMP00000023101
--------------------	------------------------------------------------------------------