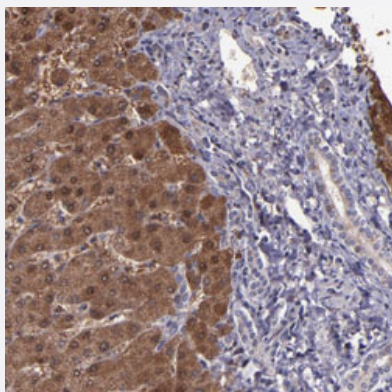


SERPINF2 polyclonal antibody

Catalog # PAB30321

Size 100 uL

Applications



Immunohistochemistry (Formalin/PFA-fixed paraffin-embedded sections)

Immunohistochemical staining (Formalin-fixed paraffin-embedded sections) of human liver with SERPINF2 polyclonal antibody (Cat # PAB30321) shows moderate cytoplasmic and nuclear positivity in hepatocytes at 1:50-1:200 dilution.

Specification

Product Description	Rabbit polyclonal antibody raised against partial recombinant human SERPINF2.
Immunogen	Recombinant protein corresponding to human SERPINF2.
Sequence	VPVEMMQARTYPLRWFLLEQPEIQVAHFPPKNNMSFVVLVPTHFENVSQVLANLSWDTLHPPLVWERPTKVRLPKLYLKHQMDLVATLSQLGLQELFQAPDLRGISEQSLVSGVQHQSTL
Host	Rabbit
Reactivity	Human
Form	Liquid
Purification	Antigen affinity purification
Isotype	IgG
Recommend Usage	Immunohistochemistry (Formalin/PFA-fixed paraffin-embedded sections) (1:50-1:200) The optimal working dilution should be determined by the end user.
Storage Buffer	In PBS, pH 7.2 (40% glycerol, 0.02% sodium azide).

Storage Instruction

Store at 4°C. For long term storage store at -20°C.
Aliquot to avoid repeated freezing and thawing.

Note

This product contains sodium azide: a POISONOUS AND HAZARDOUS SUBSTANCE which should be handled by trained staff only.

Applications

- Immunohistochemistry (Formalin/PFA-fixed paraffin-embedded sections)

Immunohistochemical staining (Formalin-fixed paraffin-embedded sections) of human liver with SERPINF2 polyclonal antibody (Cat # PAB30321) shows moderate cytoplasmic and nuclear positivity in hepatocytes at 1:50-1:200 dilution.

Gene Info — SERPINF2

Entrez GeneID[5345](#)**Protein Accession#**[P08697](#)**Gene Name**

SERPINF2

Gene Alias

A2AP, AAP, ALPHA-2-PI, API, PLI

Gene Description

serpin peptidase inhibitor, clade F (alpha-2 antiplasmin, pigment epithelium derived factor), member 2

Omim ID[262850](#)**Gene Ontology**[Hyperlink](#)**Gene Summary**

This gene encodes a member of the serpin family of serine protease inhibitors. The protein is a major inhibitor of plasmin, which degrades fibrin and various other proteins. Consequently, the proper function of this gene has a major role in regulating the blood clotting pathway. Mutations in this gene result in alpha-2-plasmin inhibitor deficiency, which is characterized by severe hemorrhagic diathesis. Multiple transcript variants encoding different isoforms have been found for this gene. [provided by RefSeq]

Other Designations

alpha-2-antiplasmin|alpha-2-plasmin inhibitor|serine (or cysteine) proteinase inhibitor, clade F (alpha-2 antiplasmin, pigment epithelium derived factor), member 2

Pathway

- [Complement and coagulation cascades](#)

Disease

- [Alzheimer disease](#)
- [Cardiovascular Diseases](#)
- [Diabetes Mellitus](#)
- [Edema](#)
- [Genetic Predisposition to Disease](#)
- [Kidney Failure](#)