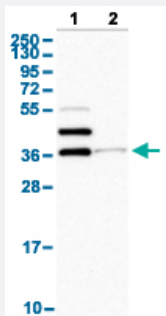


# SLAMF6 polyclonal antibody

Catalog # PAB30281      Size 100 uL

## Applications

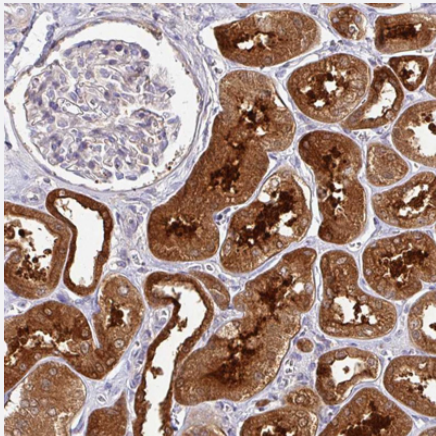


### Western Blot (Cell lysate)

Western Blot analysis with SLAMF6 polyclonal antibody (Cat # PAB30281).

Lane 1: Human cell line RT-4

Lane 2: Human cell line U-251MG sp



### Immunohistochemistry (Formalin/PFA-fixed paraffin-embedded sections)

Immunohistochemical staining (Formalin-fixed paraffin-embedded sections) of human kidney with SLAMF6 polyclonal antibody (Cat # PAB30281) shows strong cytoplasmic positivity in cells in tubules with distinct extracellular positivity.

## Specification

<b>Product Description</b>	Rabbit polyclonal antibody raised against partial recombinant human SLAMF6.
<b>Immunogen</b>	Recombinant protein corresponding to amino acids 152-224 of human SLAMF6.
<b>Sequence</b>	TCSVEDADDNVSFRWEALGNTLSSQPNLTVSWDPRISSEQDYTCIAENAVSNLSFSVSAQKLCE DVKIQYTD
<b>Host</b>	Rabbit
<b>Reactivity</b>	Human

Form	Liquid
Purification	Antigen affinity purification
Isotype	IgG
Recommend Usage	Immunohistochemistry (Formalin/PFA-fixed paraffin-embedded sections) (1:50 - 1:200) Western Blot (1:100 - 1:250) The optimal working dilution should be determined by the end user.
Storage Buffer	In PBS, pH 7.2 (40% glycerol, 0.02% sodium azide).
Storage Instruction	Store at 4°C for short term storage. For long term storage store at -20°C. Aliquot to avoid repeated freezing and thawing.
Note	This product contains sodium azide: a POISONOUS AND HAZARDOUS SUBSTANCE which should be handled by trained staff only.

## Applications

- Western Blot (Cell lysate)

Western Blot analysis with SLAMF6 polyclonal antibody (Cat # PAB30281).

Lane 1: Human cell line RT-4

Lane 2: Human cell line U-251MG sp

- Immunohistochemistry (Formalin/PFA-fixed paraffin-embedded sections)

Immunohistochemical staining (Formalin-fixed paraffin-embedded sections) of human kidney with SLAMF6 polyclonal antibody (Cat # PAB30281) shows strong cytoplasmic positivity in cells in tubules with distinct extracellular positivity.

## Gene Info — SLAMF6

Entrez GeneID	<a href="#">114836</a>
Protein Accession#	<a href="#">Q96DU3</a>
Gene Name	SLAMF6
Gene Alias	KALI, KAL1b, Ly108, MGC104953, NTB-A, NTBA, SF2000
Gene Description	SLAM family member 6
Omim ID	<a href="#">606446</a>
Gene Ontology	<a href="#">Hyperlink</a>

**Gene Summary**

The protein encoded by this gene is a type I transmembrane protein, belonging to the CD2 subfamily of the immunoglobulin superfamily. This encoded protein is expressed on Natural killer (NK), T, and B lymphocytes. It undergoes tyrosine phosphorylation and associates with the Src homology 2 domain-containing protein (SH2D1A) as well as with SH2 domain-containing phosphatases (SHPs). It may function as a coreceptor in the process of NK cell activation. It can also mediate inhibitory signals in NK cells from X-linked lymphoproliferative patients. [provided by RefSeq]

**Other Designations**

NTBA receptor|OTTHUMP00000024348|activating NK receptor|natural killer-, T- and B-cell antigen

**Disease**

- [Cardiovascular Diseases](#)
- [Diabetes Mellitus](#)
- [Edema](#)
- [Tobacco Use Disorder](#)