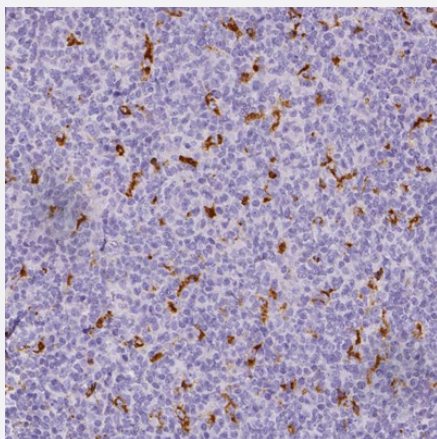


CD68 polyclonal antibody

Catalog # PAB30268 Size 100 uL

Applications



Immunohistochemistry (Formalin/PFA-fixed paraffin-embedded sections)

Immunohistochemical staining (Formalin-fixed paraffin-embedded sections) of human tonsil with CD68 polyclonal antibody (Cat # PAB30268) shows strong cytoplasmic positivity in macrophages.

Specification

Product Description	Rabbit polyclonal antibody raised against partial recombinant human CD68.
Immunogen	Recombinant protein corresponding to amino acids 150-221 of human CD68.
Sequence	SPTSKETIGDYTWNGSQPCVHLQAQIQIRVMTTQGGGEAWGISVLNPNKTKVQGSCEGAHPHL LLSFPYG
Host	Rabbit
Reactivity	Human
Form	Liquid
Purification	Antigen affinity purification
Isotype	IgG
Recommend Usage	Immunohistochemistry (Formalin/PFA-fixed paraffin-embedded sections) (1:1000 - 1:2500) The optimal working dilution should be determined by the end user.

Storage Buffer	In PBS, pH 7.2 (40% glycerol, 0.02% sodium azide).
Storage Instruction	Store at 4°C for short term storage. For long term storage store at -20°C. Aliquot to avoid repeated freezing and thawing.
Note	This product contains sodium azide: a POISONOUS AND HAZARDOUS SUBSTANCE which should be handled by trained staff only.

Applications

- Immunohistochemistry (Formalin/PFA-fixed paraffin-embedded sections)

Immunohistochemical staining (Formalin-fixed paraffin-embedded sections) of human tonsil with CD68 polyclonal antibody (Cat # PAB30268) shows strong cytoplasmic positivity in macrophages.

Gene Info — CD68

Entrez GeneID	968
Protein Accession#	P34810
Gene Name	CD68
Gene Alias	DKFZp686M18236, GP110, SCARD1
Gene Description	CD68 molecule
Omim ID	153634
Gene Ontology	Hyperlink

Gene Summary	This gene encodes a 110-kD transmembrane glycoprotein that is highly expressed by human monocytes and tissue macrophages. It is a member of the lysosomal/endosomal-associated membrane glycoprotein (LAMP) family. The protein primarily localizes to lysosomes and endosomes with a smaller fraction circulating to the cell surface. It is a type I integral membrane protein with a heavily glycosylated extracellular domain and binds to tissue- and organ-specific lectins or selectins. The protein is also a member of the scavenger receptor family. Scavenger receptors typically function to clear cellular debris, promote phagocytosis, and mediate the recruitment and activation of macrophages. Alternative splicing results in multiple transcripts encoding different isoforms. [provided by RefSeq]
---------------------	---

Other Designations	CD68 antigen OTTHUMP00000135285 macrophage antigen CD68 macrosialin scavenger receptor class D, member 1
---------------------------	--

Pathway

- [Lysosome](#)