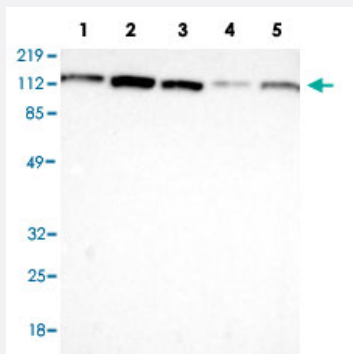


VCL polyclonal antibody

Catalog # PAB30250 Size 100 uL

Applications



Western Blot (Cell lysate)

Western Blot (Cell lysate) analysis with VCL polyclonal antibody (Cat # PAB30250) at 1:100 - 1:250 dilution

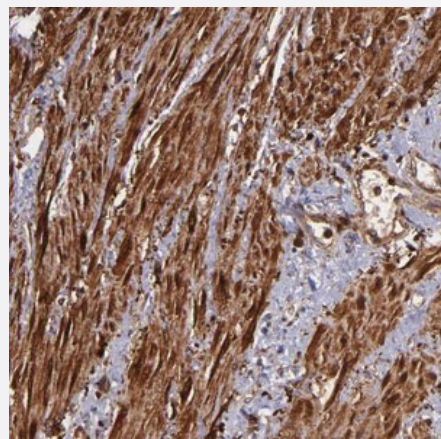
Lane 1: Human cell line RT-4

Lane 2: Human cell line U-251MG sp

Lane 3: Human cell line A-431

Lane 4: Human liver tissue

Lane 5: Human tonsil tissue



Immunohistochemistry (Formalin/PFA-fixed paraffin-embedded sections)

Immunohistochemical staining (Formalin-fixed paraffin-embedded sections) of human skeletal muscle with VCL polyclonal antibody (Cat # PAB30250) shows strong cytoplasmic positivity in smooth muscle cells at 1:50 - 1:200 dilution.

Specification

Product Description	Rabbit polyclonal antibody raised against recombinant human VCL.
Immunogen	Recombinant protein corresponding to amino acids of human VCL.
Sequence	KMIDERQQELTHQEHRVMLVNSMNTVKELLPVLISAMKIFVTTKNSKNQGIEEALKNRNFTVEKMS AEINEIRVLQLTSWDEDAWASKDTEAMKRALASIDSKLNQAKGWL RDPSASPGDAGEQAIRQILD EAGKVGELCAGKERREI
Host	Rabbit

Reactivity	Human, Mouse, Rat
Form	Liquid
Purification	Antigen affinity purification
Isotype	IgG
Recommend Usage	Immunohistochemistry (Formalin/PFA-fixed paraffin-embedded sections) (1:50-1:200) Western Blot (1:100-1:250) The optimal working dilution should be determined by the end user.
Storage Buffer	In PBS, pH 7.2 (40% glycerol, 0.02% sodium azide)
Storage Instruction	Store at 4°C. For long term storage store at -20°C. Aliquot to avoid repeated freezing and thawing.
Note	This product contains sodium azide: a POISONOUS AND HAZARDOUS SUBSTANCE which should be handled by trained staff only.

Applications

- Western Blot (Cell lysate)

Western Blot (Cell lysate) analysis with VCL polyclonal antibody (Cat # PAB30250) at 1:100 - 1:250 dilution

Lane 1: Human cell line RT-4

Lane 2: Human cell line U-251MG sp

Lane 3: Human cell line A-431

Lane 4: Human liver tissue

Lane 5: Human tonsil tissue

- Immunohistochemistry (Formalin/PFA-fixed paraffin-embedded sections)

Immunohistochemical staining (Formalin-fixed paraffin-embedded sections) of human skeletal muscle with VCL polyclonal antibody (Cat # PAB30250) shows strong cytoplasmic positivity in smooth muscle cells at 1:50 - 1:200 dilution.

Gene Info — VCL

Entrez GeneID	7414
Protein Accession#	P18206
Gene Name	VCL
Gene Alias	CMD1W, MVCL
Gene Description	vinculin

Omim ID [193065 611407](#)

Gene Ontology [Hyperlink](#)

Gene Summary

Vinculin is a cytoskeletal protein associated with cell-cell and cell-matrix junctions, where it is thought to function as one of several interacting proteins involved in anchoring F-actin to the membrane. Defects in VCL are the cause of cardiomyopathy dilated type 1W. Dilated cardiomyopathy is a disorder characterized by ventricular dilation and impaired systolic function, resulting in congestive heart failure and arrhythmia. Multiple alternatively spliced transcript variants have been found for this gene, but the biological validity of some variants has not been determined. [provided by RefSeq]

Other Designations OTTHUMP00000019861|OTTHUMP00000043885|metavinculin

Pathway

- [Adherens junction](#)
- [Focal adhesion](#)
- [Leukocyte transendothelial migration](#)
- [Regulation of actin cytoskeleton](#)

Disease

- [Alzheimer Disease](#)
- [Cardiomyopathy](#)
- [Cardiovascular Diseases](#)
- [Cleft Lip](#)
- [Cleft Palate](#)
- [Diabetes Mellitus](#)
- [Edema](#)
- [Genetic Predisposition to Disease](#)