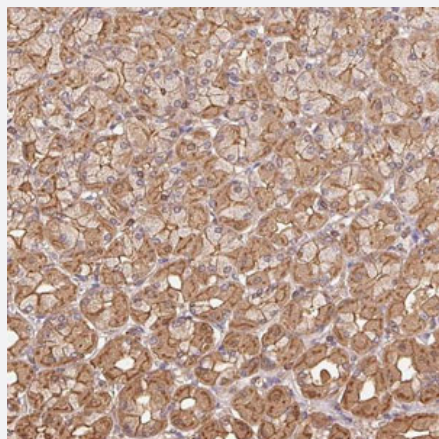


# ATG10 polyclonal antibody

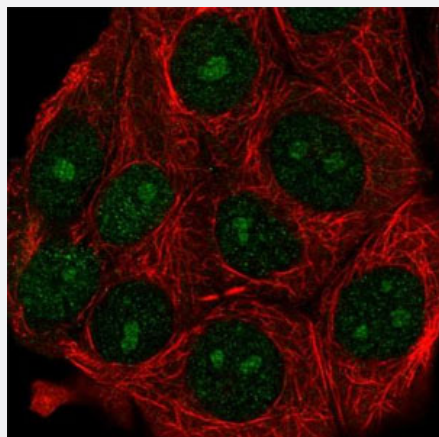
Catalog # PAB30243      Size 100 uL

## Applications



### Immunohistochemistry (Formalin/PFA-fixed paraffin-embedded sections)

Immunohistochemical staining (Formalin-fixed paraffin-embedded sections) of human stomach with ATG10 polyclonal antibody (Cat # PAB30243) shows moderate membranous and cytoplasmic positivity in glandular cells at 1:50 - 1:200 dilution.



### Immunofluorescence

Immunofluorescent staining of human cell line MCF-7 with ATG10 polyclonal antibody (Cat # PAB30243) shows positivity in nucleus and nucleoli under 1-4 ug/mL concentration. Antibody staining is shown in green.

## Specification

Product Description	Rabbit polyclonal antibody raised against recombinant human ATG10.
Immunogen	Recombinant protein corresponding to amino acids of human ATG10.
Sequence	IGDSWEWRPSKDCSDGYMCKIHFIKNGSVMSHLGASTHGQTCLPMEEAFELPLDDCEVIETAA ASEVIKYEYHVLVYSCSYQVPVLYFRASFLDGRPLTLKDIWEGVHECYKM

Host	Rabbit
Reactivity	Human
Form	Liquid
Purification	Antigen affinity purification
Isotype	IgG
Recommend Usage	Immunohistochemistry (Formalin/PFA-fixed paraffin-embedded sections) (1:50-1:200) Immunofluorescence (1-4 ug/mL) The optimal working dilution should be determined by the end user.
Storage Buffer	In PBS, pH 7.2 (40% glycerol, 0.02% sodium azide)
Storage Instruction	Store at 4°C. For long term storage store at -20°C. Aliquot to avoid repeated freezing and thawing.
Note	This product contains sodium azide: a POISONOUS AND HAZARDOUS SUBSTANCE which should be handled by trained staff only.

## Applications

- Immunohistochemistry (Formalin/PFA-fixed paraffin-embedded sections)

Immunohistochemical staining (Formalin-fixed paraffin-embedded sections) of human stomach with ATG10 polyclonal antibody (Cat # PAB30243) shows moderate membranous and cytoplasmic positivity in glandular cells at 1:50 - 1:200 dilution.

- Immunofluorescence

Immunofluorescent staining of human cell line MCF-7 with ATG10 polyclonal antibody (Cat # PAB30243) shows positivity in nucleus and nucleoli under 1-4 ug/mL concentration. Antibody staining is shown in green.

## Gene Info — ATG10

Entrez GeneID	<a href="#">83734</a>
Protein Accession#	<a href="#">Q9H0Y0</a>
Gene Name	ATG10
Gene Alias	APG10, APG10L, DKFZp586I0418, FLJ13954, pp12616
Gene Description	ATG10 autophagy related 10 homolog (S. cerevisiae)
Omim ID	<a href="#">610800</a>

## Gene Ontology

[Hyperlink](#)

## Gene Summary

Autophagy is a process for the bulk degradation of cytosolic compartments by lysosomes. ATG10 is an E2-like enzyme involved in 2 ubiquitin-like modifications essential for autophagosome formation: ATG12 (MIM 609608)-ATG5 (MIM 604261) conjugation and modification of a soluble form of MAP-LC3 (MAP1LC3A; MIM 601242), a homolog of yeast Apg8, to a membrane-bound form (Nemoto et al., 2003 [PubMed 12890687]).[supplied by OMIM]

## Other Designations

APG10 autophagy 10-like

## Disease

- [Tobacco Use Disorder](#)