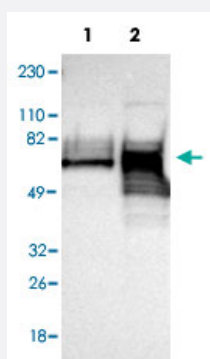


PSAP polyclonal antibody

Catalog # PAB30237 Size 100 uL

Applications

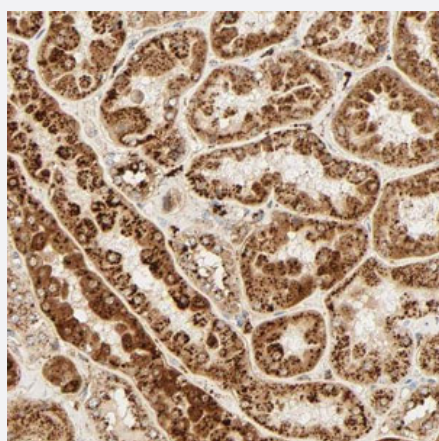


Western Blot (Cell lysate)

Western Blot (Cell lysate) analysis with PSAP polyclonal antibody (Cat # PAB30237) at 1:100 - 1:250 dilution

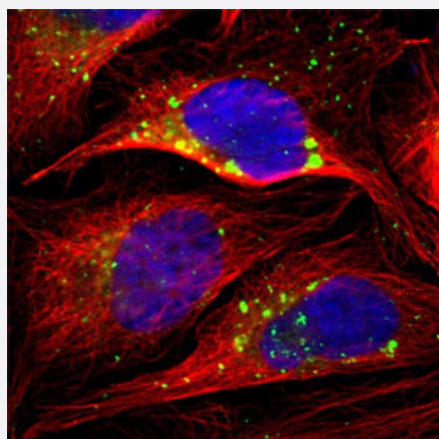
Lane 1: Human cell line RT-4

Lane 2: Human cell line U-251MG sp



Immunohistochemistry (Formalin/PFA-fixed paraffin-embedded sections)

Immunohistochemical staining (Formalin-fixed paraffin-embedded sections) of human kidney with PSAP polyclonal antibody (Cat # PAB30237) shows strong cytoplasmic positivity with a granular pattern in cells of tubules at 1:200 - 1:500 dilution.



Immunofluorescence

Immunofluorescent staining of human cell line U-2 OS with PSAP polyclonal antibody (Cat # PAB30237) shows positivity in vesicles under 1-4 ug/mL concentration. Antibody staining is shown in green.

Specification

Product Description	Rabbit polyclonal antibody raised against recombinant human PSAP.
Immunogen	Recombinant protein corresponding to amino acids of human PSAP.
Sequence	TNSTFVQALVEHVKEECDRLGPGMADICKNYISQYSEIAIQMMMHMQPKEICALVGFCDEVKEMP MQTLVPAKVASKNVIPALELVEPIKKHEVPAKSDVYCEVCEFLVKEVTKLIDNNKTEKEILDAFDK MCSKLPKSLSEE
Host	Rabbit
Reactivity	Human
Form	Liquid
Purification	Antigen affinity purification
Isotype	IgG
Recommend Usage	Immunohistochemistry (Formalin/PFA-fixed paraffin-embedded sections) (1:200-1:500) Immunofluorescence (1-4 ug/mL) Western Blot (1:100-1:250) The optimal working dilution should be determined by the end user.
Storage Buffer	In PBS, pH 7.2 (40% glycerol, 0.02% sodium azide)
Storage Instruction	Store at 4°C. For long term storage store at -20°C. Aliquot to avoid repeated freezing and thawing.
Note	This product contains sodium azide: a POISONOUS AND HAZARDOUS SUBSTANCE which should be handled by trained staff only.

Applications

- Western Blot (Cell lysate)

Western Blot (Cell lysate) analysis with PSAP polyclonal antibody (Cat # PAB30237) at 1:100 - 1:250 dilution

Lane 1: Human cell line RT-4

Lane 2: Human cell line U-251MG sp

- Immunohistochemistry (Formalin/PFA-fixed paraffin-embedded sections)

Immunohistochemical staining (Formalin-fixed paraffin-embedded sections) of human kidney with PSAP polyclonal antibody (Cat # PAB30237) shows strong cytoplasmic positivity with a granular pattern in cells of tubules at 1:200 - 1:500 dilution.

- Immunofluorescence

Immunofluorescent staining of human cell line U-2 OS with PSAP polyclonal antibody (Cat # PAB30237) shows positivity in vesicles under 1-4 ug/mL concentration. Antibody staining is shown in green.

Gene Info — PSAP

Entrez GeneID [5660](#)

Protein Accession# [P07602](#)

Gene Name PSAP

Gene Alias FLJ00245, GLBA, MGC110993, SAP1

Gene Description prosaposin

Omim ID [176801](#) [249900](#) [610539](#)

Gene Ontology [Hyperlink](#)

Gene Summary This gene encodes a highly conserved glycoprotein which is a precursor for 4 cleavage products: saposins A, B, C, and D. Each domain of the precursor protein is approximately 80 amino acid residues long with nearly identical placement of cysteine residues and glycosylation sites. Saposins A-D localize primarily to the lysosomal compartment where they facilitate the catabolism of glycosphingolipids with short oligosaccharide groups. The precursor protein exists both as a secretory protein and as an integral membrane protein and has neurotrophic activities. Mutations in this gene have been associated with Gaucher disease, Tay-Sachs disease, and metachromatic leukodystrophy. Alternative splicing results in multiple transcript variants encoding different isoforms. [provided by RefSeq]

Other Designations OTTHUMP00000019776|sphingolipid activator protein-1

Pathway

- [Lysosome](#)

Disease

- [Alzheimer Disease](#)
- [Genetic Predisposition to Disease](#)
- [Prostate cancer](#)

- [Prostatic Hyperplasia](#)
- [Prostatic Neoplasms](#)
- [Schizophrenia](#)
- [Tobacco Use Disorder](#)