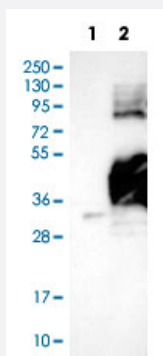


GNPTG polyclonal antibody

Catalog # PAB30236 Size 100 uL

Applications

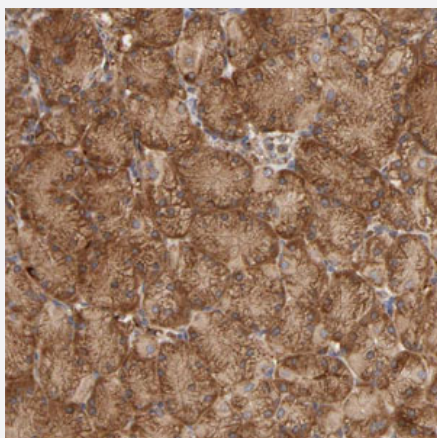


Western Blot (Cell lysate)

Western Blot (Cell lysate) analysis with GNPTG polyclonal antibody (Cat # PAB30236) at 1:100 - 1:250 dilution

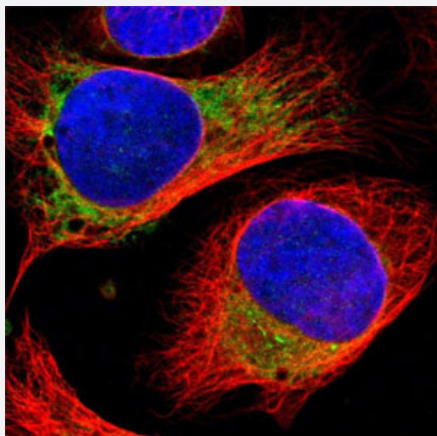
Lane 1: Negative control (vector only transfected HEK293T lysate)

Lane 2: Over-expression lysate (Co-expressed with a C-terminal myc-DDK tag (~3.1 kDa) in mammalian HEK293T cells)



Immunohistochemistry (Formalin/PFA-fixed paraffin-embedded sections)

Immunohistochemical staining (Formalin-fixed paraffin-embedded sections) of human stomach with GNPTG polyclonal antibody (Cat # PAB30236) shows strong cytoplasmic positivity in glandular cells at 1:50 - 1:200 dilution.



Immunofluorescence

Immunofluorescent staining of human cell line U-2 OS with GNPTG polyclonal antibody (Cat # PAB30236) shows positivity in endoplasmic reticulum under 1-4 ug/mL concentration. Antibody staining is shown in green.

Specification

Product Description	Rabbit polyclonal antibody raised against recombinant human GNPTG.
Immunogen	Recombinant protein corresponding to amino acids of human GNPTG.
Sequence	PHALLVYPTLPEALQRQWDQVEQDLADELITPQGHEKLLRTLFE DAGYKTP EENEPTQLEGGPD SLGFETLENCRK A HKELSKEIKRLKGLLTQHGI PYTRPTETS NLEHLG
Host	Rabbit
Reactivity	Human
Form	Liquid
Purification	Antigen affinity purification
Isotype	IgG
Recommend Usage	Immunohistochemistry (Formalin/PFA-fixed paraffin-embedded sections) (1:50-1:200) Immunofluorescence (1-4 ug/mL) Western Blot (1:100-1:250) The optimal working dilution should be determined by the end user.
Storage Buffer	In PBS, pH 7.2 (40% glycerol, 0.02% sodium azide)
Storage Instruction	Store at 4°C. For long term storage store at -20°C. Aliquot to avoid repeated freezing and thawing.
Note	This product contains sodium azide: a POISONOUS AND HAZARDOUS SUBSTANCE which should be handled by trained staff only.

Applications

- Western Blot (Cell lysate)

Western Blot (Cell lysate) analysis with GNPTG polyclonal antibody (Cat # PAB30236) at 1:100 - 1:250 dilution

Lane 1: Negative control (vector only transfected HEK293T lysate)

Lane 2: Over-expression lysate (Co-expressed with a C-terminal myc-DDK tag (~3.1 kDa) in mammalian HEK293T cells)

- Immunohistochemistry (Formalin/PFA-fixed paraffin-embedded sections)

Immunohistochemical staining (Formalin-fixed paraffin-embedded sections) of human stomach with GNPTG polyclonal antibody (Cat # PAB30236) shows strong cytoplasmic positivity in glandular cells at 1:50 - 1:200 dilution.

- Immunofluorescence

Immunofluorescent staining of human cell line U-2 OS with GNPTG polyclonal antibody (Cat # PAB30236) shows positivity in endoplasmic reticulum under 1-4 ug/mL concentration. Antibody staining is shown in green.

Gene Info — GNPTG

Entrez GeneID [84572](#)

Protein Accession# [Q9UJJ9](#)

Gene Name GNPTG

Gene Alias C16orf27, GNPTAG, LP2537, RJD9

Gene Description N-acetylglucosamine-1-phosphate transferase, gamma subunit

Omim ID [252605 607838](#)

Gene Ontology [Hyperlink](#)

Gene Summary UDP-N-acetylglucosamine:lysosomal-enzyme N-acetylglucosamine-1-phosphotransferase (GlcNAc-phosphotransferase) catalyzes the initial step in the synthesis of the mannose 6-phosphate determinant required for efficient intracellular targeting of newly synthesized lysosomal hydrolases to the lysosome. GlcNAc-phosphotransferase is an alpha-2/beta-2/gamma-2 hexameric complex, the enzyme product of 2 genes, 1 encoded by a gene on chromosome 16 (GNPTG) and the other by a gene on chromosome 12 (GNPTAB; MIM 607840).[supplied by OMIM]

Other Designations GlcNAc-phosphotransferase gamma-subunit|N-acetylglucosamine-1-phosphotransferase, gamma subunit