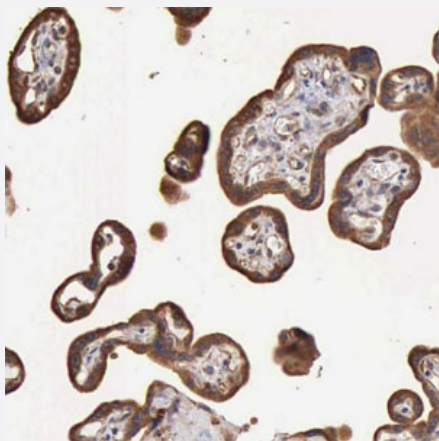


GPR101 polyclonal antibody

Catalog # PAB30235 Size 100 uL

Applications



Immunohistochemistry (Formalin/PFA-fixed paraffin-embedded sections)

Immunohistochemical staining (Formalin-fixed paraffin-embedded sections) of human placenta with GPR101 polyclonal antibody (Cat # PAB30235) shows strong nuclear positivity in trophoblastic cells at 1:200 - 1:500 dilution.

Specification

Product Description	Rabbit polyclonal antibody raised against recombinant human GPR101.
Immunogen	Recombinant protein corresponding to amino acids of human GPR101.
Sequence	RMEAKDGS LKAKEGSTGTSESSVEARGSEEVRSSSTVASDGSMEGKEGSTKVEENSMKADKG RTEVNQCSIDLGEDDMEFGEDDINFSEDDVEAVNIPESLPPSRNSNSNPPLPRCYQCKAA
Host	Rabbit
Reactivity	Human
Form	Liquid
Purification	Antigen affinity purification
Isotype	IgG
Recommend Usage	Immunohistochemistry (Formalin/PFA-fixed paraffin-embedded sections) (1:200-1:500) The optimal working dilution should be determined by the end user.

Storage Buffer	In PBS, pH 7.2 (40% glycerol, 0.02% sodium azide)
Storage Instruction	Store at 4°C. For long term storage store at -20°C. Aliquot to avoid repeated freezing and thawing.
Note	This product contains sodium azide: a POISONOUS AND HAZARDOUS SUBSTANCE which should be handled by trained staff only.

Applications

- Immunohistochemistry (Formalin/PFA-fixed paraffin-embedded sections)

Immunohistochemical staining (Formalin-fixed paraffin-embedded sections) of human placenta with GPR101 polyclonal antibody (Cat # PAB30235) shows strong nuclear positivity in trophoblastic cells at 1:200 - 1:500 dilution.

Gene Info — GPR101

Entrez GeneID	83550
Protein Accession#	Q96P66
Gene Name	GPR101
Gene Alias	GPCR6
Gene Description	G protein-coupled receptor 101
Omim ID	300393
Gene Ontology	Hyperlink
Gene Summary	G protein-coupled receptors (GPCRs, or GPRs) contain 7 transmembrane domains and transduce extracellular signals through heterotrimeric G proteins.[supplied by OMIM]
Other Designations	OTTHUMP00000024140